



CENSUS OF INDIA
1951

CHITTOOR DISTRICT

VILLAGE-WISE MOTHER-TONGUE DATA FOR BORDER TALUKS

BY

J. I. ARPUTHANATHAN, B.A., B.L.,
Superintendent of Census Operations,
Madras

PRINTED BY THE SUPERINTENDENT
GOVERNMENT PRESS
MADRAS
1955

VILLAGE-WISE MOTHER-TONGUE DATA FOR BORDER TALUKS.

CHITTOOR DISTRICT.

NOTE.

The statements appended give figures in respect of the principal mother-tongue languages for each census unit (village or town) in Chandragiri, Kalahasti, Chittoor, Puttur, Tiruttani and Palmaner taluks of Chittoor district of the Andhra State situated on the borders of the Madras State.

2. The figures have been gathered by me at the instance of the Government of India who in consultation with the State Governments concerned instructed me to gather the figures from the census enumeration slips of the 1951 Census which had been deposited for safe custody in the offices of the Collectors of the districts concerned.

3. The 1951 Census tables relating to mother-tongue languages give only figures for the district as a whole. The figures for the district were compiled from those gathered for subdivisions of districts called "Census Tracts". These census tracts are convenient divisions of the district adopted for facilitating the work of sorting the 1951 Census enumeration slips and compilation of the required statistics. In forming the census tracts the rural areas of each district were kept distinct from the urban areas. The rural areas of each district were divided into a number of units called "Rural Tracts" and the urban areas were divided into a number of units called "Urban Tracts". As far as possible the rural areas of each taluk were constituted into a single rural tract. The urban tracts were formed out of the areas declared as cities and census towns in each district. Every city was treated as a separate tract and was called a "City Tract". Towns other than cities were grouped together to form "Non-City Urban Tracts". Wherever possible the towns other than cities in each taluk were made into a single "Non-City Urban Tract". In cases where the towns in a taluk had a total population of less than 50,000, the towns in more than one taluk were grouped together to form a non-city urban tract. For example, in the Chingleput district, the towns in the taluks of Ponneri, Tiruvallur and Sriperumbudur, viz., Pulicat, Arni and Ponneri in Ponneri taluk, Tiruvallur in Tiruvallur taluk, Sriperumbudur, Poonamallee and Kunrathur in Sriperumbudur taluk were constituted into a single Non-City Urban Tract; whereas the towns in Saidapet taluk consisting of Tiruvottiyur, Villivakkam, Alandur, Pallavaram, St. Thomas Mount-cum-Pallavaram Cantonment and Tambaram were put into a single Non-City Urban Tract.

4. Under the Tabulation Plan of 1951 Census, the enumeration slips of all census units in each district

were received in the Regional Tabulation office concerned for being sorted there for arriving at the figures for the prescribed district tables. The census unit was either a village or a panchayat or a municipality inclusive of all hamlets or other villages comprised in each. The slips relating to each rural census unit were in separate bundles. In the case of census towns and cities the slips relating to each ward of the census town or city were kept distinct. In the Tabulation office, the slips relating to each rural unit and urban ward were examined and the slips relating to displaced persons were separated. A 10 per cent sample was extracted from the rest of the slips. The remaining 90 per cent slips which were called "General slips" were kept distinct. These three categories of slips, viz., General, Sample and Displaced persons, were then operated upon independently and village-wise population data in respect of rural areas and ward-wise population data in respect of the cities and towns of the urban areas were gathered with break up for sex categories and the eight livelihood classes prescribed in the Tabulation Plan. After obtaining the population figures for each village/ward the enumeration slips relating to the units in each census tract were thrown together for sorting for tract-wise details required for the several prescribed census tables. The identity of the bundles of slips relating to each village, panchayat and municipality was lost and the groups of bundles were merged into the "Census Tract". The distinction between the General slips, Sample slips and those relating to Displaced persons were, however, maintained throughout. At the close of the sorting operations, the census slips relating to each tract as distributed and bundled for the last item of the sorting operations were preserved intact under each of the three categories, General slips, Sample slips and slips relating to Displaced persons. The bundles of slips relating to the census tracts in each district were put in boxes or gunny bags, sealed and transferred to the Collector's office concerned for safe custody there. It is from these slips that the present mother-tongue language figures for each unit (village or town) in each border taluk have been collected. The procedure adopted by me is briefly indicated below.

5. Before the slips relating to the tracts in the border taluks were transported back to my office from the Collector's office where they were held in safe custody, I or one of my Gazetted Assistants personally went to the Collector's office, satisfied

himself that the seals on the boxes or gunny bags were intact, checked also that the bundles kept inside each box or gunny bag were in accordance with the list of contents of the box kept inside it by the Tabulation office, resealed them and had them transported to my office. On their receipt in my office, the slips relating to each tract were first counted to find out if the total number of slips agreed with the total of the population figures of the tract originally obtained and recorded. Care was also taken to verify with reference to the code numbers of the taluks mentioned on the slips, if the slips relating to any other tract were mixed up with those of the tract to which the slips purported to relate.

Regular sorting for language figures was commenced only thereafter. The operations consisted of two stages. At the first stage the slips were sorted out for the units in the tract, viz., villages, panchayats and municipalities. This sorting was done with reference to the location code number of the village entered at the top of each slip. The number of slips representing the population figure thus obtained in respect of each village or panchayat or municipal town was compared with the population figure of the same village, panchayat or municipal town obtained at the original census sorting in order to ensure that the slips of each village were all available. The sorting for villages thus made was checked cent per cent by persons specially appointed as Compiler-checkers. A fair percentage of the work done by the sorters and Compiler-checkers was also checked by me and by my two Deputy Superintendents.

6. At the second stage of sorting the slips relating to each village, panchayat or municipality were sorted out for the principal mother-tongue languages of the taluk. The slips relating to persons with languages other than the principal mother-tongue languages were kept separate and counted. At this stage also a cent per cent check of the work done by the sorters was effected by the checkers. The check related not only to language sorting but also to the counting done. A large percentage of the work done by the sorters and Compiler-checkers at this stage also was over-checked by me and by my Deputy Superintendents. The figures thus obtained for each of the principal languages and "Other languages" were posted for the villages and towns in each taluk. The figures shown in the statements appended have thus been arrived at after careful sorting and a close cent per cent check at each stage.

7. The population figures obtained for each village or panchayat or municipality agreed with those obtained at the original census sorting in most cases. Differences were noticed only in a few cases. The differences in some cases were due to the fact that at the 1951 Census the enumerators or the Supervisors who had been assigned portions or blocks of *more than*

one village had in a few cases mixed up the slips relating to a portion or a block of one village with those of the other village with the result that they were sorted with the slips relating to the latter village. This defect has been set right at the present sorting. In all such cases I have taken care to arrive at the correct figures by a reference to the National Register of Citizens relating to the units.

In some cases the enumerators had omitted to mark the code number of the village on some of the slips. In most cases, it was possible to locate the village to which they related either by reference to the handwriting on the slips, or by reference to the name of the village, entered on many of them against the answer to question 10 (Means of Livelihood and place of work). In every case the identification was got confirmed by a reference to the relevant National Register of Citizens. Where such identification could not be secured the slips were treated as unidentifiable and shown as such in the statements appended.

8. The total of the language figures obtained at the present sorting in respect of the units in the rural tracts when compared with those arrived at at the 1951 sorting for the same rural tracts showed some variations. Such comparison in respect of figures relating to urban units in a taluk now obtained is not possible as only "tract" figures were compiled at the 1951 Census and not figures for urban units in a taluk and as already pointed out in paragraph 3 *supra* a non-city urban tract invariably comprised towns in more than one taluk. The reason for the difference in the rural tracts is this :—

In some cases the enumerator had omitted to mark against the appropriate question the symbol relating to the mother-tongue language of the individual represented by the slip. In some cases the symbol marked was either unintelligible or meaningless. For example, the language symbol marked by some enumerators in the case of children was 'O'. According to the instructions issued for the original census sorting, the language of the individual in whose case there is no entry in the slip should be taken as the language of the district, unless the entries relating to other members of the same household provided a different indication specifically. In the course of the speedy sorting done in 1951 the sorters naturally found little time to look up the slips relating to other members of the household or lost sight of the omission at the initial checking stage and sorted such slips under the language of the district. At the present sorting, I instructed the sorters and Compiler-checkers to fix the exact mother-tongue in such cases by tracing a slip relating to another member of the same household and wherever this could not be done the slips were examined by me or by my two Deputy Superintendents and we fixed the language with reference to other internal evidence such as the name of the individual and the community to which he belonged. Only

those cases where the language of the individual could not be fixed as above were put under 'Other languages'.

Every effort has been made to give as correct a picture as possible in regard to the number of persons speaking the principal mother-tongue languages.

The percentages of the mother-tongue speakers to the total population of the village have been worked out and given in the statements appended alongside the absolute figures.

9. Out of the six border taluks of Chittoor district for which villagewise language data are given in the appended statements, linguistic map of all taluks except Chandragiri are attached to the relative statements. In the case of Palmaner taluk, the map shows only the Kangundi sub-taluk portion of the taluk, which is a multi-lingual area with Telugu, Tamil and Kannada as the principal mother-tongue languages. The map is intended to show the location of all the census units in the taluk. The location of the unit is indicated by the location code number assigned to it for purposes of the census enumeration of 1951 Census. The percentage of persons speaking the principal mother-tongue languages in each unit to the total population of the unit has also been given below the location code number of the unit. The percentage figures for Kannada language in Kangundi sub-taluk have been exhibited in the map only in respect of those villages where Kannada is found to be the

predominant mother-tongue. Boundaries have also been roughly indicated wherever possible and necessary. In the case of surveyed areas, unit boundaries have been indicated in full. But in the case of unsurveyed blocks and areas, boundaries of units have been indicated only in cases where one or more of the adjacent units have a predominance in a different mother-tongue language. The boundaries shown are not to scale and are only approximate. They serve to indicate the location and not the area or contours. All the units in which a language other than the principal language of the State predominates, i.e., where the number of persons speaking that language exceeds 50 per cent have been coloured. The units in which none of the principal mother-tongue languages preponderates have been marked with broken lines. Uninhabited villages have been indicated by the letters 'U.I.' put underneath the code number of the unit. Units where the principal language of the State predominates have been left uncoloured. It is hoped that the map will prove useful for the purpose for which it is intended.

In the case of Chandragiri taluk it has been considered unnecessary to prepare linguistic map as the villages showing a predominance in the number of Tamil speakers are but a few and even these villages lie scattered as pockets in the interior of the taluk and away from the borders of the Madras State.

MADRAS, J. I. ARPUTHANATHAN,
16th July 1955. *Superintendent of Census Operations.*

STATISTICS OF PERSONS SPEAKING THE PRINCIPAL MOTHER-TONGUE LANGUAGES IN VILLAGES AND TOWNS IN CERTAIN BORDER TALUKS OF CHITTOOR DISTRICT.

(Compiled from the 1951 Census enumeration slips.)

(i) CHANDRAGIRI TALUK.

Code number and name of village or town.	Population.	Mother-tongue.					
		Absolute figures.			Percentage to total population.		
		Tamil.	Telugu.	Other languages.	Tamil.	Telugu.	Other languages.
(1)	(2)	(3)	(4)	(5)	(6)	(7)	(8)
1 Ramireddigaripalli	275	..	274	1	..	99·6	0·4
2 Bodireddigaripalli	52	..	44	8	..	84·6	15·4
3 Diguvalakalavaripalli	157	..	157	100	..
4 Chigaramakulapalli	207	..	207	100	..
5 Peddathimmaiahgaripalli ..	133	..	37	96	..	27·8	72·2
6 Eguvalakalavaripalli	75	..	75	100	..
7 Aravavandlapalli	63	..	63	100	..
8 Chigaraiahgaripalli	147	..	147	100	..
9 Kanchamvaripalli	54	..	51	3	..	94·4	5·6
10 Katarivaripalli (Uninhabited)
11 Veerannagaripalli (Uninhabited)
12 Yelamaramanjampalli (Uninhabited).
13 Mungaravaripalli (Uninhabited)
14 Mallalavaripalli (Uninhabited)
15 Mugachintamanipalli (Uninhabited).
16 Siddareddigaripalli (Uninhabited).
17 Ramisetthivaripalli (Uninhabited).
18 Bodireddikaderellakandigai (Uninhabited).
19 Inukolavandlapalli	32	..	32	100	..
20 Besthapalli	237	..	237	100	..
21 Devalapalliramireddigaripalli ..	40	..	40	100	..
22 Sarva inam Raghavacharavandlapalli (Uninhabited).
23 Bestareddigaripalli (Uninhabited).
24 Peddammagaripalli	47	..	46	1	..	97·9	2·1
25 Ayyavandlapalli	72	..	72	100	..
26 Yerramvandlapalli	95	..	95	100	..
27 Mangalapalli	27	..	27	100	..
28 Medasanivaripalli (Uninhabited).
29 Nallappareddigaripalli	125	..	125	100	..
30 Nallaguntlapalli (Uninhabited)
31 Errapapireddigaripalli	152	..	152	100	..
32 Ramappanaidupalli	14	..	14	100	..
33 Peddamadulareddigaripalli	96	..	96	100	..
34 Kankurthivaripalli (Uninhabited).
35 Kurappagaripalli (Uninhabited)
36 Peddavenkatareddigaripalli (Uninhabited).
37 Kasivireddigaripalli	14	2	12	..	14·3	85·7	..
38 Bandarivaripalli	296	1	290	5	0·3	98·0	1·7
39 Desireddigaripalli	220	..	215	5	..	97·7	2·3
40 Vagallavaripalli	138	..	138	100	..
41 Vankimaddivaripalli	253	2	251	..	0·8	99·2	..
42 Kammapalli	372	7	365	..	1·9	98·1	..
43 Reddivaripalli	474	2	313	159	0·4	66·0	33·6
44 Muppireddigaripalli	12	..	9	3	..	75·0	25·0
45 Itlamvaripalli	192	46	145	1	24·0	75·5	0·5

(i) CHANDRAGIRI TALUK—cont.

Code number and name of village or town.	Population.	Mother-tongue.					
		Absolute figures.			Percentage to total population.		
		Tamil.	Telugu.	Other languages.	Tamil.	Telugu.	Other languages.
(1)	(2)	(3)	(4)	(5)	(6)	(7)	(8)
101 Guttakindapalli (Uninhabited)
102 Polukkummarapalli (Uninhabited)
103 Chintamanipenta (Uninhabited)
104 Papireddigaripalli (Uninhabited)
105 Mittameddipalli	75	..	65	10	..	86·7	13·3
106 Venkayalapativaripalli (Uninhabited).
107 Kokkuvaripalli	136	..	59	77	..	43·4	56·6
108 Kurapalli (Uninhabited)
109 Kamatampalli	107	..	107	100	..
110 Rachapalli Erramreddipalli ..	42	..	42	100	..
111 Oddepalli (Uninhabited)
112 Penuhalavundlapalli (Uninhabited).
113 Marriguntavaripalli	40	3	36	1	7·5	90·0	2·5
114 Panubalavandla Eguvapalli ..	45	..	45	100	..
115 Gilakamanipenta (Uninhabited No. 174).
116 Danamathivaripenta (Uninhabited).
117 Devalampet	54	2	52	..	3·7	96·3	..
118 Digumoorthivandlapalli	83	..	83	100	..
119 Dasarigangisetipalli	15	..	15	100	..
120 Vankayalapativaripalli	291	13	277	1	4·5	95·2	0·3
121 Balireddigaripalli	132	..	132	100	..
122 Kommireddigaripalli	16	14	2	..	87·5	12·5	..
123 Peddavaripalli (Uninhabited)
124 Maddevaripalli	146	..	146	100	..
125 Tainkondavaripalli	175	..	175	100	..
126 Rayavaripalli	137	1	136	..	0·7	99·3	..
127 Oddepalli	434	5	429	..	1·2	98·8	..
128 Guthipativaripalli	56	..	56	100	..
129 Pasamvaripalli	75	..	75	100	..
130 Bayyareddipalli	184	..	184	100	..
131 Vallivetivaripalli	282	..	282	100	..
132 Kalibandivaripalli (Uninhabited)
133 Medikondavaripalli	108	..	108	100	..
134 Pottoddupalli (Uninhabited)
135 Sadhu Badivaripalli	54	..	54	100	..
136 Vallivedu	723	18	612	93	2·5	84·6	12·9
137 Ravaniahgaripalli	543	13	249	281	2·4	45·9	51·7
138 Chandragirivaripalli	245	5	240	..	2·0	98·0	..
139 Vallurivaripalli	79	..	25	54	..	31·6	68·4
140 Mallappagaripalli	198	..	198	100	..
141 Sircar Palaguttapalli	2	..	2	100	..
142 Telligundlapalli	343	40	303	..	11·5	88·5	..
143 Inam Tupalaguttapalli	613	..	613	100	..
144 Boripalli	2,116	85	2,013	18	4·0	95·1	0·9
145 Yellamkivaripalli	684	..	420	264	..	61·4	38·6
146 Gelasamvaripalli	164	10	153	1	6·1	93·3	0·6
147 Vellavaripalli	97	6	91	..	6·2	93·8	..
148 Banganivaripalli	42	..	42	100	..
149 Diguvamoorthivaripalli	174	8	166	..	4·6	95·4	..
150 Gopannagaripalli	144	..	144	100	..
151 Pochamvaripalli	215	4	211	..	1·9	98·1	..
152 Sircar. Sathubadivaripalli (Uninhabited).
153 Kalrodipalle	1,448	46	1,402	..	3·2	96·8	..
154 Mungilpet Kothapalli	1,329	19	1,301	9	1·4	97·9	0·7
155 Aithepalli	1,460	45	1,230	185	3·1	84·2	12·7

(i) CHANDRAGIRI TALUK—cont.

Code number and name of village or town.	Population.	Mother-tongue.					
		Absolute figures.			Percentage to total population.		
		Tamil.	Telugu.	Other languages.	Tamil.	Telugu.	Other languages.
(1)	(2)	(3)	(4)	(5)	(6)	(7)	(8)
156 Mamandur	260	..	260	100	..
157 Agarala	512	12	421	79	2.4	82.2	15.4
158 Kotala	1,569	1	1,563	5	0.1	99.6	0.3
159 Ramireddipalli	857	..	857	100	..
160 Reddivaripalli	253	..	253	100	..
161 Narasingapuram	1,547	23	1,489	35	1.5	96.2	2.3
162 Mittapoliem	1,133	14	1,109	10	1.2	97.9	0.9
163 Buchinaidupalli	707	5	702	..	0.7	99.3	..
164 Kalur	493	..	331	162	..	67.1	32.9
165 Pudipatla	3,265	21	3,240	4	0.7	99.2	0.1
166 Mallavaram	978	..	814	164	..	83.2	16.8
167 Cherlopalli	851	29	814	8	3.4	95.7	0.9
168 Perur	1,586	58	1,527	1	3.6	96.3	0.1
169 Pathakalve	216	..	216	100	..
170 Gollapalle	541	1	530	10	0.2	98.0	1.8
171 Ramanujapalli	400	2	398	..	0.5	99.5	..
172 Thummalagunta	911	1	909	1	0.1	99.8	0.1
173 Muthyalareddipalli	999	133	819	47	13.3	82.0	4.7
174 Tirupati (Rural)	1,392	327	994	71	23.5	71.4	5.1
175 Tirupati (Non-City Urban)	25,316	4,333	17,232	3,751	17.1	68.1	14.8
176 Thumbavanigunta	13	..	13	100	..
177 Akkarampalli	1,133	290	839	4	25.6	74.0	0.4
178 Korlagunta	85	2	83	..	2.4	97.6	..
179 Konkachennayagunta	34	1	33	..	2.9	97.1	..
180 Gollavanigunta (Uninhabited)
181 Poolavanikunta	2	..	2	100	..
182 Koramenigunta	67	..	67	100	..
183 Upparapaliam	107	..	107	100	..
184 Mangalam	360	3	357	..	0.8	99.2	..
185 Chennayyagunta	174	..	174	100	..
186 Settupalli	385	1	384	..	0.3	99.7	..
187 Ragavapuram Agraharam	277	13	254	10	4.7	91.7	3.6
188 Renigunta (Non-City Urban)	3,315	995	1,395	925	30.0	42.1	27.9
189 Annasamipalli	295	..	295	100	..
190 Thimmayyagunta	113	..	113	100	..
191 Venkamanaidupalli	112	..	112	100	..
192 Venkatapuram	505	..	505	100	..
193 Sreenivasanagaram	4	..	4	100	..
194 Erragunta	1	..	1	100	..
195 Karakambadi	2,526	128	2,393	5	5.1	94.7	0.2
196 Renigunta Agraharam	356	14	340	2	3.9	95.5	0.6
197 Puthirenigunta	199	1	194	4	0.5	97.5	2.0
198 Anagunta (Uninhabited)
199 Berivanigunta (Uninhabited)
200 Madigavanigunta (Uninhabited)
201 Vedullacheruvu	677	8	668	1	1.2	98.7	0.1
202 Guravarajupaliam	220	19	201	..	8.6	91.4	..
203 Dharmapuram Kandiga	145	..	136	9	..	93.8	6.2
204 Krishnamacharu Kandiga (Uninhabited)
205 Lakshmakka Agraharam	203	6	197	..	3.0	97.0	..
206 Mallavaram	1,209	23	1,172	14	1.9	96.9	1.2
207 Sreenivasaudasipuram	266	10	252	4	3.8	94.7	1.5
208 Krishnapuram	947	12	934	1	1.3	98.6	0.1
209 Padipatlabylu	1,180	32	948	200	2.7	80.3	17.0
210 Damalcheruvu	5,612	161	4,256	1,195	2.9	75.8	21.3

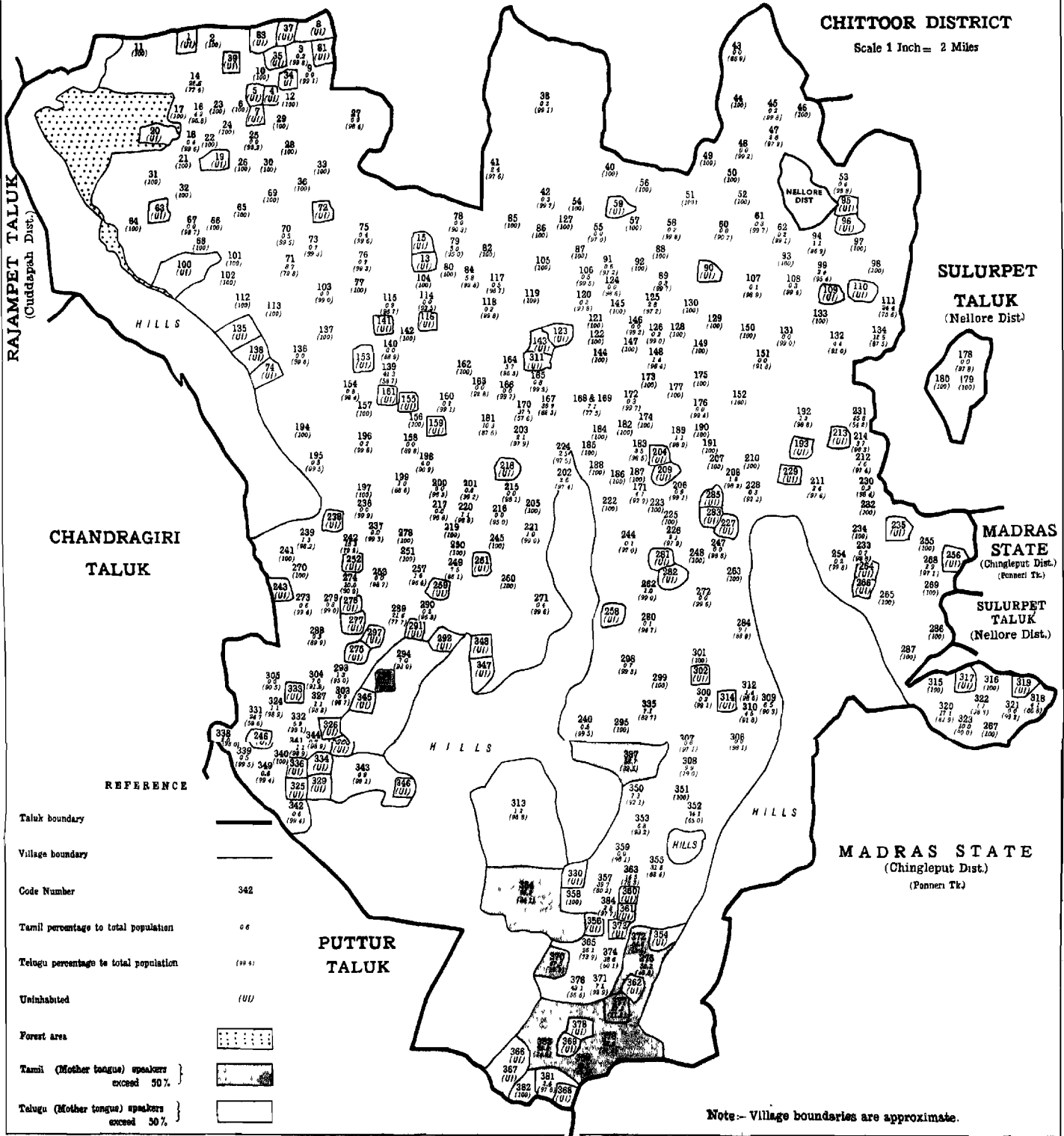
(i) CHANDRAGIRI TALUK—cont.

Code number and name of village or town.	Population.	Mother-tongue.					
		Absolute figures.			Percentage to total population.		
		Tamil.	Telugu.	Other languages.	Tamil.	Telugu.	Other languages.
(1)	(2)	(3)	(4)	(5)	(6)	(7)	(8)
211 Thotathimmiahpalli	732	10	722	..	1.4	98.6	..
212 Mogarala	2,249	7	2,107	135	0.3	93.7	6.0
213 Maddinayanipalli	1,461	3	1,458	..	0.2	99.8	..
214 Ganigapenta	1,007	..	1,007	100	..
215 Peddaramapuram	1,061	140	921	..	13.2	86.8	..
216 Gorpadu	1,640	117	1,519	4	7.1	92.6	0.3
217 Pakala (Non-City Urban)	4,404	1,315	2,305	784	29.9	52.3	17.8
218 Pakala (Rural)	8,254	1,480	6,179	595	17.9	74.9	7.2
219 Adenapalli	1,086	260	819	7	23.9	75.4	0.7
220 Nagamma Agraharam (Uninhabited)
221 Oddepalli	1,986	1	1,950	35	..	98.2	1.8
222 Achamma Agraharam	652	4	647	1	0.6	99.2	0.2
223 Jakkidona	2,167	347	1,819	1	16.0	83.9	0.1
224 Gadanki	1,856	17	1,839	..	0.9	99.1	..
225 Panapakam	2,300	286	1,989	25	12.4	86.5	1.1
226 Dornakambala	1,511	5	1,503	3	0.3	99.5	0.2
227 Chandragiri	1,657	..	1,648	9	..	99.5	0.5
228 Chandragiri (Rural)	4,905	342	4,158	405	7.0	84.8	8.2
229 Thondavada	1,806	8	1,235	63	0.6	94.6	4.8
230 Sanambatala	1,081	..	1,081	100	..
231 Paidipalli	725	10	715	..	1.4	98.6	..
232 Chintagunta	9	..	5	4	..	55.6	44.4
233 Gollapalli (Uninhabited)
234 Chiguruvada S. Kandiga	1,578	87	1,353	138	5.5	85.7	8.8
235 Durgasamudram	1,346	247	1,096	3	18.4	81.4	0.2
236 Pillapaliem	391	8	377	6	2.1	96.4	1.5
237 Kuntrapakam	1,570	16	1,461	93	1.0	93.1	5.9
238 Thanapalli	572	..	572	100	..
239 Kupuchandrapeta	269	1	268	..	0.4	99.6	..
240 Avilalavedantapuram	987	..	986	1	..	99.9	0.1
241 Tiruchanoor	2,306	1,310	894	102	56.8	38.8	4.4
242 Nallamanikalva	497	7	483	7	1.4	97.2	1.4
243 Mundlapudi	446	297	149	..	66.6	33.4	..
244 Vemur	700	9	629	62	1.3	89.9	8.8
245 Panakam	824	1	822	1	0.1	99.8	0.1
246 Kothuru	87	..	87	100	..
247 Brahmanapattu	1,293	637	607	49	49.3	46.9	3.8
248 Padi	1,491	565	915	11	37.9	61.4	0.7
249 Thandlam	684	14	667	3	2.1	97.5	0.4
250 Sanjeevirayanipatteda	155	12	143	..	7.7	92.3	..
251 Kotramangalam	316	3	313	..	0.9	99.1	..
252 Daminedu	155	..	155	100	..
253 Erramareddipalem	133	..	133	100	..
254 Thukivakam	1,390	131	1,231	28	9.4	88.6	2.0
255 Surappakasam	1,642	152	1,465	25	9.3	89.2	1.5
256 Molagamudi	370	..	345	25	..	93.2	6.8
257 Athuru	813	68	745	..	8.4	91.6	..
258 Gazulamandem	1,773	73	1,655	45	4.1	93.4	2.5
259 Thathayyakalva	204	14	190	..	6.9	93.1	..
260 Elamandem	499	10	489	..	2.0	98.0	..
261 Adusupaliem	137	..	137	100	..
262 Marrigunta	113	44	69	..	38.9	61.1	..
263 Otigunta (Uninhabited)
264 Nallapalem	239	..	239	100	..
265 Jeepalem	405	..	405	100	..
266 Krishnayyakalva	200	..	200	100	..
267 Kothapaliem	339	..	339	100	..
268 Kurukalva	142	..	142	100	..
Village numbers not noted	81	9	71	1	11.1	87.7	1.2
Taluk total	1,65,066	16,240	1,35,802	13,024	9.8	82.3	7.9

VENKATAGIRI TALUK
(Nellore District)

KALAHASTI TALUK
CHITTOOR DISTRICT

Scale 1 Inch = 2 Miles



CHANDRAGIRI TALUK

SULURPET TALUK
(Nellore Dist.)

MADRAS STATE
(Chingleput Dist.)
(Pannett Tk.)

SULURPET TALUK
(Nellore Dist.)

MADRAS STATE
(Chingleput Dist.)
(Pannett Tk.)

PUTTUR TALUK

REFERENCE

- Taluk boundary
- Village boundary
- Code Number 342
- Tamil percentage to total population 0.0
- Telegu percentage to total population (99.4)
- Uninhabited (UI)
- Forest area
- Tamil (Mother tongue) speakers exceed 50%
- Telegu (Mother tongue) speakers exceed 50%

Note:- Village boundaries are approximate.

(ii) KALAHASTI TALUK.

Code number and name of village or town.	Population.	Mother-tongue.					
		Absolute figures.			Percentage to total population.		
		Tamil.	Telugu.	Other languages.	Tamil.	Telugu.	Other languages.
(1)	(2)	(3)	(4)	(5)	(6)	(7)	(8)
1 Madavarikandriga (Uninhabited).
2 Kothapallichintala	76	..	76	100	..
3 Inagaloor	525	1	524	..	0.2	99.8	..
4 Athigunta (Uninhabited)
5 Bakkatallagunta (Uninhabited)
6 Komativangigunta	1	..	1	100	..
7 Dorruragunta (Uninhabited)
8 Jaggurajupalli (Uninhabited)
9 Kumaravenkatapansidupet ..	106	..	105	1	..	99.1	0.9
10 Mamidigunta	139	..	139	100	..
11 Madhavagiripalli	21	..	21	100	..
12 Govindaraopalli	88	..	88	100	..
13 Siddugunta (Uninhabited)
14 Mannavaram	283	64	219	..	22.6	77.4	..
15 Reddigunta (Uninhabited)
16 Nimmarallapalli	118	5	113	..	4.2	95.8	..
17 Kandragunta	62	..	62	100	..
18 Kalavagunta	247	1	246	..	0.4	99.6	..
19 Bheeminenigunta (Uninhabited)
20 Yerrakalahastigunta (Uninhabited).
21 Gundlapalli	93	..	93	100	..
22 Bathalapalli	61	..	61	100	..
23 Repalli	16	..	16	100	..
24 Rajugunta	153	..	153	100	..
25 Velampadu	709	..	682	27	..	96.2	3.8
26 Mangalagunta	49	..	49	100	..
27 Poli	443	..	436	7	..	98.4	1.6
28 Ammacheruvu	70	..	70	100	..
29 Timmavaram	179	..	179	100	..
30 Pathagunta	174	..	174	100	..
31 Kalampalli	74	..	74	100	..
32 Yarlapudi	239	..	239	100	..
33 Empedu	357	..	357	100	..
34 Balamambapuram (Uninhabited).
35 Petagunta (Uninhabited)
36 Vengalampalli	272	..	272	100	..
37 Kondachenukandriga (Uninhabited).
38 Kasaram	2,565	6	2,541	18	0.2	99.1	0.7
39 Rudramurthipuram (Uninhabited).
40 Dynedu	194	..	194	100	..
41 Chiyavaram	680	16	664	..	2.4	97.6	..
42 Chemuru	301	1	300	..	0.3	99.7	..
43 Dwarakapuram	252	..	219	33	..	86.9	13.1
44 Mambaka	143	..	143	100	..
45 Palachur	619	1	618	..	0.2	99.8	..
46 Dirasamaly	152	..	152	100	..
47 Kappaguntakandriga	142	4	138	..	2.8	97.2	..
48 Jangalapalli	120	..	119	1	..	99.2	0.8
49 Anakavolu	194	..	194	100	..
50 Perumallapalli	99	..	99	100	..
51 Pidikitimala	109	..	109	100	..
52 Edapudi	58	..	58	100	..
53 Jeelapatu	1,541	7	1,522	12	0.4	98.8	0.8
54 Chinnakanuparthi	254	..	254	100	..
55 Peddakanuparthi	402	..	390	12	..	97.0	3.0

(ii) KALAHASTI TALUK—cont.

Code number and name of village or town.	Population.	Mother-tongue.					
		Absolute figures.			Percentage to total population.		
		Tamil.	Telugu.	Other languages.	Tamil.	Telugu.	Other languages.
(1)	(2)	(3)	(4)	(5)	(6)	(7)	(8)
56 Kalavakur	370	..	370	100	..
57 Pullur	549	..	549	100	..
58 Chintapudi	443	1	442	..	0.2	99.8	..
59 Juvvimanigunta (Uninhabited)
60 Ravulapadu	343	..	311	32	..	90.7	9.3
61 Kothur	335	1	334	..	0.3	99.7	..
62 Pellakur	586	1	581	4	0.2	99.1	0.7
63 Chintalagunta (Uninhabited)
64 Melachoor	39	..	39	100	..
65 Papanapalli	192	..	192	100	..
66 Brhmanapalli	166	..	166	100	..
67 Venkatapuram	476	..	470	6	..	98.7	1.3
68 Bahadurvenkatapuram	469	..	469	100	..
69 Vagavedu	347	..	347	100	..
70 Ellampalli	221	1	220	..	0.5	99.5	..
71 Chellamagaripet	104	9	83	12	8.7	79.8	11.5
72 Venkatapuram (Uninhabited)
73 Pallam	701	5	696	..	0.7	99.3	..
74 Andanalagunta (Uninhabited)
75 Gangalapudi	271	1	270	..	0.4	99.6	..
76 Yalavedu	307	2	305	..	0.7	99.3	..
77 Madamala	210	..	210	100	..
78 Reddipalli	226	..	204	22	..	90.3	9.7
79 Obulayapalli	421	21	400	..	5.0	95.0	..
80 Yerraguntakandriga	7	..	7	100	..
81 Yerramreddipalli (Uninhabited)
82 Siddugunta	27	..	27	100	..
83 Komativanigunta (Uninhabited)
84 Muddumudi	207	12	192	3	5.8	92.8	1.4
85 Chodavaram	429	..	429	100	..
86 Peddagunta Agraharam	55	..	55	100	..
87 Konnali	196	..	196	100	..
88 Muppalavari kandriga	41	..	41	100	..
89 Neluballi	1,058	3	1,055	..	0.3	99.7	..
90 Sethumadhavapuram (Uninhabited).
91 Konathaneri	1,070	6	1,040	24	0.6	97.2	2.2
92 Pasupu kandriga	127	..	127	100	..
93 Eguvathageli	98	..	98	100	..
94 Chennappanaidupet	360	4	349	7	1.1	96.9	2.0
95 Abakavari kandriga (Uninhabited).
96 Ummalagunta (Uninhabited)
97 Pathipadu	107	..	107	100	..
98 Nallagundla kandriga	59	..	59	100	..
99 Chembedu	1,436	35	1,370	31	2.4	95.4	2.2
100 Murthipalem (Uninhabited)
101 Kuntipudi	151	..	151	100	..
102 Kothur	45	..	45	100	..
103 Chintalapalem	198	..	196	2	..	99.0	1.0
104 Mangalapuri	152	..	152	100	..
105 Virupakshapuram	170	..	170	100	..
106 Pennalapadu	367	2	365	..	0.5	99.5	..
107 Punubaka	1,066	1	1,054	11	0.1	98.9	1.0
108 Arlapadu	324	1	322	1	0.3	99.4	0.3
109 Settigunta (Uninhabited)
110 Madinenipalem (Uninhabited)

(ii) KALAHASTI TALUK—cont.

Code number and name of village or town.	Population.	Mother-tongue.					
		Absolute figures.			Percentage to total population.		
		Tamil.	Telugu.	Other languages.	Tamil.	Telugu.	Other languages.
(1)	(2)	(3)	(4)	(5)	(6)	(7)	(8)
111 Nandimala	258	63	195	..	24.4	75.6	..
112 Ramanujapalli	110	..	110	100	..
113 Venkatapalem	48	..	48	100	..
114 Dodlamitta	93	..	87	6	..	93.5	6.5
115 Muchivolu	1,014	9	1,001	4	0.9	98.7	0.4
116 Bodavaripalli (Uninhabited)
117 Akkurthi	1,715	8	1,659	48	0.5	96.7	2.8
118 Kammakothur	612	1	611	..	0.2	99.8	..
119 Gundelagunta	243	..	243	100	..
120 Pooni	571	1	570	..	0.2	99.8	..
121 Seshamanaidukandrigai	212	..	212	100	..
122 Kompalli Raghavayyakandriga.	7	..	7	100	..
123 Seshayyagunta (Uninhabited)
124 Ilagunoor	276	..	272	4	..	98.6	1.4
125 Gurukulapalem	180	5	175	..	2.8	97.2	..
126 Poyya	1,320	2	1,307	11	0.2	99.0	0.8
127 Malleswarapuram	11	..	11	100	..
128 Kuruvakanneri	79	..	79	100	..
129 Lingamanaidupalli	244	..	244	100	..
130 Gummidigunta	25	..	25	100	..
131 Ardhama	407	..	403	4	..	99.0	1.0
132 Putteri	367	16	334	17	4.4	91.0	4.6
133 Ramareddipalem	19	..	19	100	..
134 Yerraguntakandriga	16	2	14	..	12.5	87.5	..
135 Juvvalamanda (Uninhabited)
136 Amuduru	517	..	515	2	..	99.6	0.4
137 Mollampalli	34	..	34	100	..
138 Gantalagunta (Uninhabited)
139 Pagali	201	83	118	..	41.3	58.7	..
140 Venkatapuramkandriga	9	..	8	1	..	88.9	11.1
141 Venkatammagunta (Uninhabited).
142 Yerragudipadu	221	..	221	100	..
143 Visalapuram (Uninhabited)
144 Kothakandriga	87	..	87	100	..
145 Chinnakannali	87	..	87	100	..
146 Peddasingamala	387	..	384	3	..	99.2	0.8
147 Chinnasingamala	395	..	395	100	..
148 Peddakannali	1,941	28	1,910	3	1.4	98.4	0.2
149 Malligunta	102	..	102	100	..
150 Sivaramapuram	90	..	90	100	..
151 Ravuthooramala	289	..	264	25	..	91.3	8.7
152 Vengamambapuram	64	..	64	100	..
153 Raghavapuram (Uninhabited)
154 Paaguru	1,316	11	1,295	10	0.8	98.4	0.8
155 Chintagunta (Uninhabited)
156 Karnagunta	7	..	7	100	..
157 Srinivasapuram	111	..	111	100	..
158 Maddiledu	605	..	543	62	..	89.8	10.2
159 Ramachandrapuram (Uninhabited).
160 Guntakindapalli	546	1	541	4	0.2	99.1	0.7
161 Botramanigunta (Uninhabited).
162 Jingilipalam	173	..	173	100	..
163 Narayanapuram	474	..	440	34	..	92.8	7.2
164 Aravakothoor	907	34	873	..	3.7	96.3	..
165 Ardhalamittaputtur	851	7	844	..	0.8	99.2	..

(ii) KALAHASTI TALUK—cont.

Code number and name of village or town.	Population.	Mother-tongue					
		Absolute figures.			Percentage to total population.		
		Tamil.	Telugu.	Other languages.	Tamil.	Telugu.	Other languages.
(1)	(2)	(3)	(4)	(5)	(6)	(7)	(8)
166 Penkulapadu	381	..	380	1	..	99.7	0.3
167 Balajipantula Agraharam ..	1,571	579	979	13	36.9	62.3	0.8
168 Kalahasti (P) (Non-City Urban)..	17,935	1,269	13,907	2,759	7.1	77.5	15.4
169 Lobhavikandriga (included in No. 168).
170 Panagal	2,559	960	1,475	124	37.5	57.6	4.9
171 Timmabhupalepuram	510	21	474	15	4.1	92.9	3.0
172 Basavayyapalem	332	1	331	..	0.3	99.7	..
173 Gnanammakandriga	334	..	334	100	..
174 Sambayyapalem	555	..	555	100	..
175 Bhavanisankarapuram	212	..	212	100	..
176 Gowdamala	161	..	160	1	..	99.4	0.6
177 BasavaAnagunta	66	..	66	100	..
178 Achukatla	89	..	87	2	..	97.8	2.2
179 Manganeloro	617	..	617	100	..
180 Suddamaduguthagali	37	..	37	100	..
181 Urandur	1,572	162	1,377	33	10.3	87.6	2.1
182 Kornagunta Utharapu kandriga.	49	..	49	100	..
183 Tottambedu	310	11	299	..	3.5	96.5	..
184 Cherukuragappa Naidu kandriga.	97	..	97	100	..
185 Gnanamambapuram	81	..	81	100	..
186 Mangalapalli Venkatarayudu-kandriga.	10	..	10	100	..
187 Tatipatri Sitaramanaidu kandriga.	13	..	13	100	..
188 Chilakavari kandriga	19	..	19	100	..
189 Tangellapalem	445	5	440	..	1.1	98.9	..
190 Tikkalatoor	64	..	64	100	..
191 Kothapalem	145	..	145	100	..
192 Alathur	1,212	15	1,197	..	1.2	98.8	..
193 Vijayagopalapuram (Uninhabited).
194 Krishnampalli	165	..	165	100	..
195 Nachaneri	606	3	603	..	0.5	99.5	..
196 Chindapalli	437	1	436	..	0.2	99.8	..
197 Mangamambapuram	12	..	12	100	..
198 Mairimakulachevu kandriga ..	174	7	157	10	4.0	90.2	5.8
199 Rachagunneri	193	2	171	20	1.0	88.6	10.4
200 Kapagunneri	623	..	600	23	..	96.3	3.7
201 Cherlopalli	626	5	621	..	0.8	99.2	..
202 Chukkalanidigallu	387	10	377	..	2.6	97.4	..
203 Allimadugu	140	3	137	..	2.1	97.9	..
204 Chellamambapuram (Uninhabited)
205 Sahasralingeswarapuram	11	..	11	100	..
206 Parlapalli	696	6	690	..	0.9	99.1	..
207 Kothapalem	514	..	514	100	..
208 Pallamala	506	9	497	..	1.8	98.2	..
209 Tirumalapuram (Uninhabited)
210 Swarnamambapuram	64	..	64	100	..
211 Anantapuram	289	7	282	..	2.4	97.6	..
212 Chinnapaavedu	76	2	74	..	2.6	97.4	..
213 Balakrishnapuram (Uninhabited).
214 Peddapalavedu	245	9	236	..	3.7	96.3	..
215 Ammapalem	717	..	689	28	..	96.1	3.9
216 Pullareddi kandriga	1,700	..	1,615	85	..	95.0	5.0
217 Challapsirom	536	..	519	17	..	96.8	3.2
218 Cherlopalli Vyavasayapu kandriga (Uninhabited).
219 Bokkasampalem	410	..	410	100	..
220 Eguraveedhi	1,227	13	1,213	1	1.1	98.8	0.1

(P) = Panchayats.

(ii) KALAHASTI TALUK—cont.

Code number and name of village or town.	Population.	Mother-tongue.					
		Absolute figures.			Percentage to total population.		
		Tamil.	Telugu.	Other languages.	Tamil.	Telugu.	Other languages.
(1)	(2)	(3)	(4)	(5)	(6)	(7)	(8)
221 Vedam	673	7	666	..	1.0	99.0	..
222 Kachalagunta	8	..	8	100	..
223 Sivandhapalem	136	..	136	100	..
224 Nellimani kandriga	79	2	77	..	2.5	97.5	..
225 Dongalamudur	90	..	90	100	..
226 Karakollu	332	7	325	..	2.1	97.9	..
227 Musaliyellammagunta (Uninhabited).
228 Katuru	844	3	778	63	0.3	92.2	7.5
229 Umamaheswarapuram (Uninhabited).
230 Kanamanambadu	515	1	507	7	0.2	98.4	1.4
231 Chinnapapa Agraharam	24	11	13	..	45.8	54.2	..
232 Buchinaidu kandriga	472	..	472	100	..
233 Nirpakota	680	5	672	3	0.7	98.8	0.5
234 Tanigallu	32	..	32	100	..
235 Vidwan Maharajapuram (Uninhabited).
236 Merlapaka	720	..	719	1	..	99.9	0.1
237 Balakrishnapuram	142	..	141	1	..	99.3	0.7
238 Amanduru (Uninhabited)
239 Vyasasramam	222	3	218	1	1.3	98.2	0.5
240 Marrigunta	203	1	202	..	0.5	99.5	..
241 Sitarampet	112	..	112	100	..
242 Yerpedu	907	139	718	50	15.3	79.2	5.5
243 Annasagaragunta (Uninhabited)
244 Chittathur	861	1	835	25	0.1	97.0	2.9
245 Ramalingapuram	45	..	45	100	..
246 Narlavari kandriga (Uninhabited).
247 Tummalagunta	86	..	85	1	..	98.8	1.2
248 Saddikuti kandriga	39	..	39	100	..
249 Venkatapuram	253	19	223	11	7.5	88.1	4.4
250 Subbanaidu kandriga	374	..	374	100	..
251 Mannasamudram	513	..	513	100	..
252 Nagasanigunta (Uninhabited)
253 Venkatapuram	553	..	546	7	..	98.7	1.3
254 Kampalem	411	1	410	..	0.2	99.8	..
255 Gazulapellur	614	..	614	100	..
256 Gorripudi (Uninhabited)
257 Bandarupalli	1,002	16	966	20	1.6	96.4	2.0
258 Bharata kandriga (Uninhabited).
259 Ponneripalli (Uninhabited)
260 Abbatlapalli	204	..	204	100	..
261 Gnanamambapuram (Uninhabited).
262 Pavanivari kandriga	384	4	380	..	1.0	99.0	..
263 Bonupalli	439	..	439	100	..
264 Kottacheruvukandriga (Uninhabited).
265 Kukkambaka	507	..	507	100	..
266 Kukkambaka Polam Lakshmi- puram (Uninhabited).
267 Lakshmi- puram	9	..	9	100	..
268 Kanchanaputtur	553	16	537	..	2.9	97.1	..
269 Karakambattu	200	..	200	100	..
270 Pedda Anjimedu	1,396	..	1,396	100	..
271 Ramapuram	461	2	459	..	0.4	99.6	..
272 Kanchanapalli	509	..	507	2	..	99.6	0.4
273 Isakthageli	657	4	653	..	0.6	99.4	..
274 Kobaka	1,001	100	901	..	10.0	90.0	..
275 Vengamambapuram (Uninhabited).

(ii) KALAHASTI TALUK—cont.

Code number and name of village or town.	Population.	Mother-tongue					
		Absolute figures.			Percentage to total population.		
		Tamil.	Telugu.	Others. languages.	Tamil.	Telugu.	Other languages.
(1)	(2)	(3)	(4)	(5)	(6)	(7)	(8)
276 Konerigunta (Uninhabited)
277 Kovanurukandriga (Uninhabited).
278 Kuppayyakandriga	43	..	43	100	..
279 Pathaveerapuram	769	6	761	2	0.8	99.0	0.2
280 Kovanoor	861	1	815	45	0.1	94.7	5.2
281 Chuttugunta (Uninhabited)
282 Angeripalem (Uninhabited)
283 Kundellagunta (Uninhabited)
284 Anjoor	1,475	143	1,312	20	9.7	88.9	1.4
285 Avulavarikandriga (Uninhabited).
286 Karani	200	..	200	100	..
287 Damasavaripalem	20	..	20	100	..
288 Madhavamala	613	2	551	60	0.3	89.9	9.8
289 Modugulapalem	560	121	435	4	21.6	77.7	0.7
290 Musalipodu	1,232	3	1,186	43	0.2	96.3	3.5
291 Reddigunta (Uninhabited)
292 Ulsagunta (Uninhabited)
293 Madibaka	596	8	566	22	1.3	95.0	3.7
294 Kandadu	784	55	729	..	7.0	93.0	..
295 Rajupalem	135	..	135	100	..
296 Venkatapuram	44	26	18	..	59.1	40.9	..
297 Lakshminarasambapuram (Uninhabited).
298 Timmasamudram	690	5	685	..	0.7	99.3	..
299 Appalayagunta	16	..	16	100	..
300 Sooramala	566	1	561	4	0.2	99.1	0.7
301 Anantapadmanabhapuram ..	52	..	52	100	..
302 Chellamambapuram (Uninha- bited).
303 Mahankalideviputtur	824	..	797	27	..	96.7	3.3
304 Munagalapalem	805	56	734	15	7.0	91.2	1.8
305 Govindavaram	201	..	182	19	..	90.5	9.5
306 Venkatapuram	375	..	368	7	..	98.1	1.9
307 Brahmanapalli	1,193	7	1,159	27	0.6	97.1	2.3
308 Bakkapotugunta	81	8	64	9	9.9	79.0	11.1
309 Adaram Venkatapuram	93	6	84	3	6.5	90.3	3.2
310 Adaram	485	22	445	18	4.5	91.8	3.7
311 Gudalegunta (Uninhabited)
312 Yellamanyamkandriga	143	2	141	..	1.4	98.6	..
313 Adavaram	765	9	733	23	1.2	95.8	3.0
314 Pagadamanigunta (Uninhabited).
315 Kammapalli	159	..	159	100	..
316 Venugopalapuram	217	..	217	100	..
317 Venugopalapuram (Uninha- bited).
318 Chavali Lingamanaidupalli ..	1,160	47	775	338	4.1	66.8	29.1
319 Lakshminambapuram (Uninha- bited).
320 Kallivet	673	115	558	..	17.1	82.9	..
321 Satambedu	250	..	248	2	..	99.2	0.8
322 Talarivet	719	12	707	..	1.7	98.3	..
323 Kurinjilam	221	22	199	..	10.0	90.0	..
324 Vikruthamala	726	8	718	..	1.1	98.9	..
325 Pillarigunta (Uninhabited)
326 Polayyagunta (Uninhabited)
327 Chelluru	804	9	790	5	1.1	98.3	0.6
328 Kukkalagunta (Uninhabited)
329 Sadasivapuram (Uninhabited)
330 Lilanadheswarapuram (Uninha- bited).

(ii) KALAHASTI TALUK—cont.

Code number and name of village or town.	Population.	Mother-tongue					
		Absolute figures.			Percentage to total population.		
		Tamil.	Telugu.	Other languages.	Tamil.	Telugu.	Other languages.
(1)	(2)	(3)	(4)	(5)	(6)	(7)	(8)
331 Papanaidupet	1,480	366	882	232	24.7	59.6	15.7
332 Marrimanda	394	27	367	..	6.9	93.1	..
333 Kisarapalem (Uninhabited)
334 Kothacheruvukandriga (Uninhabited).
335 Ragigunta	698	50	584	64	7.1	83.7	9.2
336 Bommanagunta (Uninhabited)
337 Perindesam	569	334	225	10	58.7	39.5	1.8
338 Kothakalava	198	4	194	..	2.0	98.0	..
339 Chennampalli	412	2	410	..	0.5	99.5	..
340 Naravarikandriga	52	..	52	100	..
341 Penumallam	459	5	454	..	1.1	98.9	..
342 Tirupanambedu	177	1	176	..	0.6	99.4	..
343 Ravillavarikandriga	232	2	230	..	0.9	99.1	..
344 Gudimallam	890	6	880	4	0.7	98.9	0.4
345 Vadlagunta (Uninhabited)
346 Velalacheruvu (Uninhabited)
347 Gnanammamet (Uninhabited)
348 Reddigunta (Uninhabited)
349 Pennagadam	320	2	318	..	0.6	99.4	..
350 Matam	520	38	479	3	7.3	92.1	0.6
351 Rangiahgunta	226	..	226	100	..
352 Poodi	885	302	575	8	34.1	65.0	0.9
353 Rajulakandriga	738	50	688	..	6.8	93.2	..
354 Kanchanachangannaidukandriga (Uninhabited).
355 Katrapalli	797	252	545	..	31.6	68.4	..
356 Lakshmikumaravenkatapuram (Uninhabited).
357 Kalathur	1,161	461	699	1	39.7	60.2	0.1
358 Geddagunta	9	..	9	100	..
359 Mahadevapuram	108	..	106	2	..	98.1	1.9
360 Kumaravenkatapuram (Uninhabited).
361 Chendrakanteswarapuram (Uninhabited).
362 Chendrasekharapuram (Uninhabited).
363 Kumarabhoopalapuram	166	24	130	12	14.5	78.3	7.2
364 Pathapalem	411	271	140	..	65.9	34.1	..
365 Olloor	870	227	643	..	26.1	73.9	..
366 Chinnamaila (Uninhabited)
367 Peddamaila (Uninhabited)
368 Srirampuram (Uninhabited)
369 Subramanyapuram (Uninhabited).
370 Siddamanaidukandriga	271	237	34	..	87.5	12.5	..
371 Kasiviswanathapuram	184	13	171	..	7.1	92.9	..
372 Kanchanachengannakandriga (Krishnapuram).	130	84	46	..	64.6	35.4	..
373 Valapalagunta (Uninhabited)
374 Rayapedu	624	241	375	8	38.6	60.1	1.3
375 Vagathuru	412	207	205	..	50.2	49.8	..
376 Sadasivapuram	601	259	340	2	43.1	56.6	0.3
377 Srinivasapuram	305	266	34	5	87.2	11.2	1.6
378 Desullapalli (Uninhabited)
379 Arai	1,204	812	378	14	67.4	31.4	1.2
380 Middekandriga	588	345	243	..	58.7	41.3	..
381 Kotamangapuram	457	11	446	..	2.4	97.6	..
382 Eguvaputtur	210	..	210	100	..
383 Diguvaputtur	412	351	61	..	85.2	14.8	..
384 Swarnalingeswarapuram	133	3	130	..	2.3	97.7	..
Village numbers not noted ..	84	4	74	6	4.8	88.1	7.1
Taluk total ..	1,37,076	9,876	1,22,308	4,892	7.2	89.2	3.6

REFERENCE

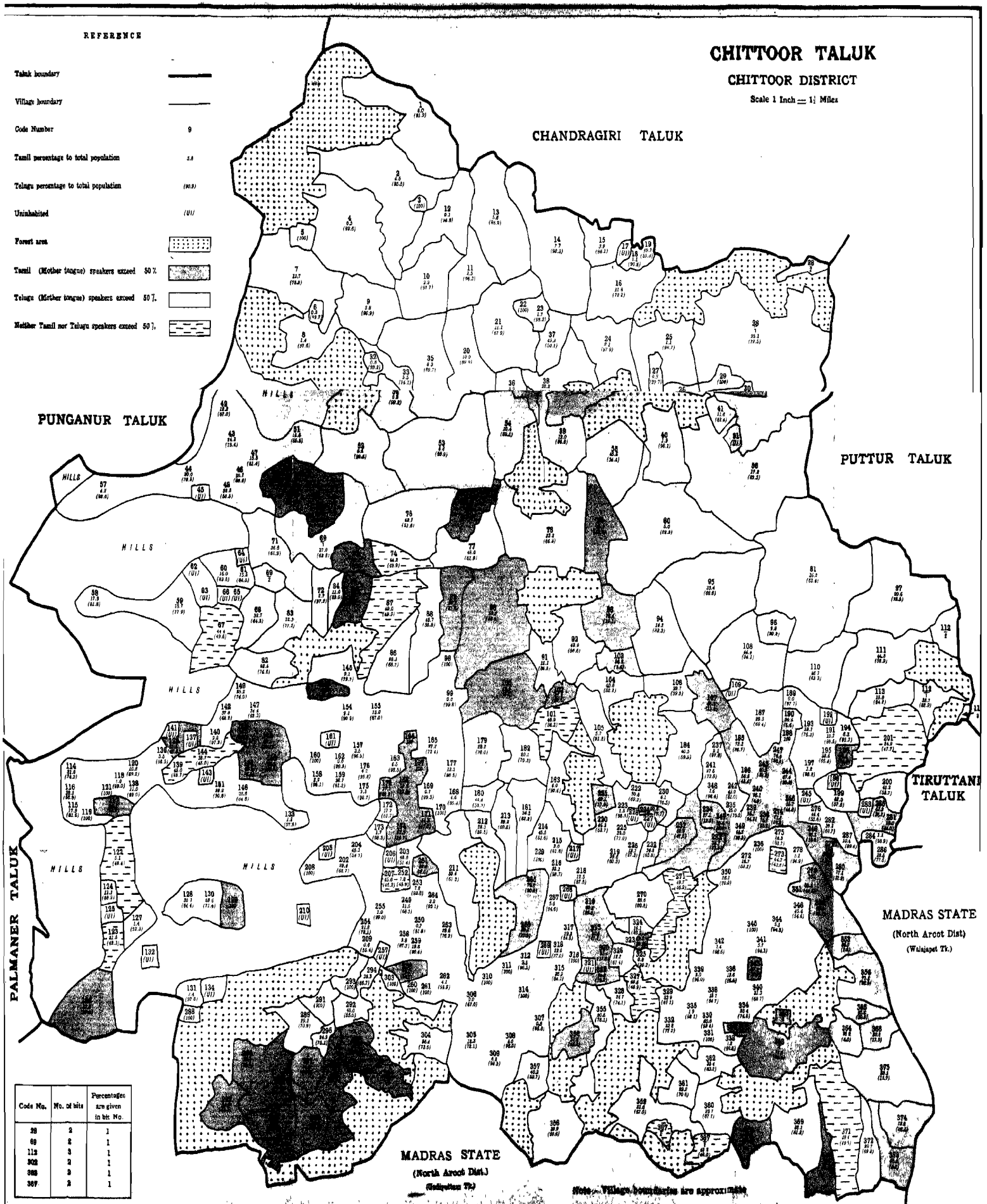
- Taluk boundary
- Village boundary
- Code Number 9
- Tamil percentage to total population 2.8
- Telugu percentage to total population (10.9)
- Uninhabited (U)
- Forest area
- Tamil (Mother tongue) speakers exceed 50%
- Telugu (Mother tongue) speakers exceed 50%
- Neither Tamil nor Telugu speakers exceed 50%

CHITTOOR TALUK

CHITTOOR DISTRICT

Scale 1 Inch = 1 Mile

CHANDRAGIRI TALUK



Code No.	No. of bits	Percentages are given in bit No.
98	2	1
99	2	1
112	2	1
302	2	1
309	2	1
307	2	1

MADRAS STATE
(North Arcot Dist.)
(Madurai Tr.)

Note: Village boundaries are approximate

(iii) CHITTOOR TALUK.

Code number and name of village or town.	Population.	Mother-tongue.					
		Absolute figures.			Percentage to total population.		
		Tamil.	Telugu.	Other languages.	Tamil.	Telugu.	Other languages.
(1)	(2)	(3)	(4)	(5)	(6)	(7)	(8)
1 Gundlapalli	2,449	197	2,250	2	8.0	91.9	0.1
2 Polakala	4,981	223	4,757	1	4.5	95.5	..
3 Peddasamireddipalli	1	..	1	100	..
4 Nampalle	3,278	8	3,264	6	0.2	99.6	0.2
5 Ayilukrishnareddipalle	47	..	47	100	..
6 Venkatasamudra Agraharam	329	1	328	..	0.3	99.7	..
7 Irala	2,193	257	1,649	287	11.7	75.2	13.1
8 Erlampalle	1,431	35	1,396	..	2.4	97.6	..
9 Morampalle	1,442	84	1,311	47	5.8	90.9	3.3
10 Errachervupalle	1,457	32	1,424	1	2.2	97.7	0.1
11 Talupulapalle	1,098	17	1,079	2	1.5	98.3	0.2
12 Pattoor	1,275	1	1,209	65	0.1	94.8	5.1
13 Potukanama	2,588	144	2,283	161	5.6	88.2	6.2
14 Kothakota	2,914	223	2,690	1	7.7	92.3	..
15 Chitipiralla	928	36	892	..	3.9	96.1	..
16 Venuthanapalle	2,164	602	1,562	..	27.8	72.2	..
17 Siddalinganapalle (Uninhabited)
18 Therubailukothapalle	93	1	90	2	1.1	96.8	2.1
19 Tippanapalle	169	84	85	..	49.7	50.3	..
20 Baitapalle	1,467	147	1,318	2	10.0	89.9	0.1
21 Thenepalle	1,944	605	1,320	19	31.1	67.9	1.0
22 Vepanapalle	206	..	206	100	..
23 Kothapalle	120	2	118	..	1.7	98.3	..
24 Polavaram	1,908	41	1,867	..	2.1	97.9	..
25 Chintapenta	1,673	18	1,652	3	1.1	98.7	0.2
26 Thathireddipalli (Uninhabited)
27 Ammagaripalle	311	1	310	..	0.3	99.7	..
28 Penumur	8,608	2,160	6,289	209	25.1	72.5	2.4
29 Chervaganipalle	443	..	443	100	..
30 Chennasamudra Agraharam	260	241	19	..	92.7	7.3	..
31 Kondama Agraharam (Uninhabited)
32 Sangapanapalle	263	2	261	..	0.8	99.2	..
33 Kollapalle	506	28	476	2	5.5	94.1	0.4
34 Kaminayanipalle	1,124	2	1,122	..	0.2	99.8	..
35 Pullur	2,314	192	2,075	47	8.3	89.7	2.0
36 Petaagraharam	571	22	549	..	3.9	96.1	..
37 Akanambat	613	302	307	4	49.3	50.1	0.6
38 Puthalpat	2,827	627	2,010	190	22.2	71.1	6.7
39 Oddepalle	958	115	832	11	12.0	86.8	1.2
40 Chinnamareddikhandrigai	1,135	22	1,113	..	1.9	98.1	..
41 Mopireddipalle	352	41	311	..	11.6	88.4	..
42 Sarakallu	838	103	729	6	12.3	87.0	0.7
43 Gurukuvaripalle	1,212	294	914	4	24.3	75.4	0.3
44 Mallakunta	656	131	513	12	20.0	78.2	1.8
45 Maddavaripalle (Uninhabited)
46 Kattakindapalle	568	61	492	15	10.7	86.6	2.7
47 Govindareddipalle	555	86	452	17	15.5	81.4	3.1
48 Gandupalle	407	95	230	82	23.3	56.5	20.2
49 Thodathara	538	296	270	22	50.3	45.9	3.8
50 Cherlopalle	810	511	291	8	63.1	35.9	1.0
51 Vengampalle	943	137	806	..	14.5	85.5	..
52 Puthramaddi	1,418	3	1,411	4	0.2	99.5	0.3
53 Mudigolam	3,678	323	3,196	159	8.8	86.9	4.3
54 Palakoor	1,839	197	1,690	2	10.4	89.5	0.1
55 Kaligiri	1,460	666	794	..	45.6	54.4	..
56 Culical	5,613	973	4,631	9	17.3	82.5	0.2
57 Madhavaram	409	17	379	13	4.2	92.6	3.2
58 Thumba	691	124	565	2	17.9	81.8	0.3
59 Kuppam	1,908	357	1,486	65	18.7	77.9	3.4
60 Setteri	550	88	459	3	16.0	83.5	0.5

(iii) CHITTOOR TALUK—cont.

Code number and name of village or town.	Population.	Mother-tongue.					
		Absolute figures.			Percentage to total population.		
		Tamil.	Telugu.	Other languages.	Tamil.	Telugu.	Other languages.
(1)	(2)	(3)	(4)	(5)	(6)	(7)	(8)
61 Thumpayanapalle	278	43	235	..	15.5	84.5	..
62 Chervumundarapalle (Uninhabited).
63 Javukupalle (Uninhabited)
64 Kondamanayudupolem (Uninhabited).
65 Mittapalle (Uninhabited)
66 Bairuganipalle (Uninhabited)
67 Nallangadu	1,140	506	565	69	44.4	49.6	6.0
68 Sadakuppam	722	236	466	20	32.7	64.5	2.8
69 Aragonda	3,435	928	2,192	315	27.0	63.8	9.2
70 Eachaneri	863	579	235	49	67.1	27.2	5.7
71 Paimagham	1,857	680	1,150	27	36.6	61.9	1.5
72 Diguvamagham	1,193	32	1,160	1	2.7	97.2	0.1
73 Pallicheruvu	800	459	286	55	57.4	35.7	6.9
74 Karakampalle	690	305	344	41	44.2	49.9	5.9
75 Kothapalle	1,986	848	1,024	114	42.7	51.6	5.7
76 Chigarapalle	690	407	240	43	59.0	34.8	6.2
77 Kanipakam	2,531	1,214	1,313	4	48.0	51.9	0.1
78 Vavilthota	3,102	1,000	2,055	47	32.2	66.3	1.5
79 Muthireval	2,152	1,646	495	11	76.5	23.0	0.5
80 Kalavagunta	4,355	218	3,580	557	5.0	82.2	12.8
81 Nellepalle	5,316	1,923	3,372	21	36.2	63.4	0.4
82 Muttukur	575	135	429	11	23.5	74.6	1.9
83 Mathyam	1,804	403	1,392	9	22.3	77.2	0.5
84 Eguvathadakara	501	55	446	..	11.0	89.0	..
85 Diguathadakara	683	355	294	34	52.0	43.0	5.0
86 Puttur	2,309	649	1,586	74	28.1	68.7	3.2
87 Tavanampalle	2,068	1,014	1,032	22	49.0	49.9	1.1
88 Utkarabrahmanapalle	1,617	706	902	9	43.7	55.8	0.5
89 Punyasamudram	954	660	206	88	69.2	21.6	9.2
90 Patnam	3,040	1,603	1,424	13	52.7	46.9	0.4
91 Mangasamudram (Rural)	807	98	698	11	12.1	86.5	1.4
92 Thimmasamudram (Rural)	1,363	586	771	6	43.0	56.6	0.4
93 Murukambat	2,668	2,091	511	66	78.4	19.1	2.5
94 Kotrakona	1,464	208	1,220	36	14.2	83.3	2.5
95 Naadanoor	3,022	1,010	2,012	..	33.4	66.6	..
96 Gollapalli	245	24	221	..	9.8	90.2	..
97 Vinjam	3,840	791	2,900	149	20.6	75.5	3.9
98 Narasimhanapalle	223	..	223	100	..
99 Nalisettipalle	477	..	476	1	..	99.8	0.2
100 Tenebanda	2,980	1,682	1,282	16	56.5	43.0	0.5
101 Chittoor Municipality (Non-City Urban).	38,735	18,171	14,830	5,734	46.9	38.3	14.8
102 Chittoor (Rural)	1,493	923	486	84	61.8	32.6	5.6
103 Doddipalle	1,135	1,096	39	..	96.6	3.4	..
104 Kattamanohi	887	362	462	63	40.8	52.1	7.1
105 Gandlapalli	526	30	483	13	5.7	91.8	2.5
106 Peddakalva	1,475	586	878	11	39.7	59.5	0.8
107 Velkoo	1,617	1,424	186	7	88.1	11.5	0.4
108 Gangadharanellore	1,696	752	918	26	44.4	54.1	1.5
109 Nallarallapalle (Uninhabited)
110 Vepenjeri	1,723	632	1,091	..	36.7	63.3	..
111 Varattur	2,390	1,059	1,265	66	44.3	52.9	2.8
112 Pachigunta	728	245	458	25	33.7	62.9	3.4
113 Bukkapatnam (Inam)	1,222	193	1,029	..	15.8	84.2	..
114 Mogili	391	82	290	19	21.0	74.2	4.8
115 Gundlapalle	592	106	483	3	17.9	81.6	0.5

(iii) CHITTOOR TALUK—cont.

Code number and name of village or town.	Population.	Mother-tongue.					
		Absolute figures.			Percentage to total population.		
		Tamil.	Telugu.	Other languages.	Tamil.	Telugu.	Other languages.
(1)	(2)	(3)	(4)	(5)	(6)	(7)	(8)
116 Mogilivaripalle	486	161	325	..	33.1	66.9	..
117 Konduvaripalle	132	86	46	..	65.2	34.8	..
118 Balijapalle	98	1	97	..	1.0	99.0	..
119 Gadidona	7	..	7	100	..
120 Palamakulapalle	158	17	141	..	10.8	89.2	..
121 Bandarlapalle	6	..	6	100	..
122 Tekumanda	918	47	389	482	5.1	42.4	52.5
123 Keeramanda	634	263	268	103	41.5	42.3	16.2
124 Kamakshammapuram	9	1	8	..	11.1	88.9	..
125 Guttamidapalle (Uninhabited)
126 Bandladoddi	369	189	144	36	51.2	39.0	9.8
127 Vepanapalle	350	5	323	22	1.4	92.3	6.3
128 Ragimanipenta	1,034	363	666	5	35.1	64.4	0.5
129 Chandrasekarapuram	11	11	100
130 Bezwada Lingannakhandigai	35	10	25	..	28.6	71.4	..
131 Eguvakanathalacheruvu	176	13	163	..	7.4	92.6	..
132 Vontimitta (Uninhabited)
133 Bodabanda	544	8	531	5	1.5	97.6	0.9
134 Kalepalle Mogilayya Kandiga (Uninhabited).
135 Paleru	338	174	164	..	51.5	48.5	..
136 Vadalapoda	230	8	222	..	3.5	96.5	..
137 Mukkamareddipalle (Uninhabited).
138 Bandarlapalle	82	9	73	..	11.0	89.0	..
139 Venkatagiri	902	406	214	282	45.0	23.7	31.3
140 Tagguvaripalle	36	1	35	..	2.8	97.2	..
141 Mothagunta (Uninhabited)
142 Karidivaripalle	352	133	219	..	37.8	62.2	..
143 Settiboyanapalle (Uninhabited)
144 Adareddipalle	269	104	121	44	38.7	45.0	16.3
145 Kothapalle	44	4	32	8	9.1	72.7	18.2
146 Gollapalle	3,621	819	2,345	457	22.6	64.8	12.6
147 Nalagampalle	1,534	528	956	50	34.4	62.3	3.3
148 Thimmojipalle	631	328	208	95	52.0	33.0	15.0
149 Bommaipalle	626	158	463	5	25.2	74.0	0.8
150 Jambuvaripalle	112	72	26	14	64.3	23.2	12.5
151 Yerrandlapalle	390	114	276	..	29.2	70.8	..
152 Mungaramadugupalle	351	349	2	..	99.4	0.6	..
153 Danduvaripalle	263	139	124	..	52.9	47.1	..
154 Tambuganipalle	1,185	108	1,077	..	9.1	90.9	..
155 Venkatapuram	354	46	308	..	13.0	87.0	..
156 Jilledupalle	513	338	137	38	65.9	26.7	7.4
157 Kallurupalle	488	17	471	..	3.5	96.5	..
158 Eddulavaripalle	362	14	348	..	3.9	96.1	..
159 Korivivaripalle	313	121	192	..	38.7	61.3	..
160 Katappagaripalle	415	..	415	100	..
161 Mangapuram (Uninhabited)
162 Gundlakattamanchi	1,485	..	1,483	2	..	99.9	0.1
163 Sankrantipalle	291	19	272	..	6.5	93.5	..
164 Karipreddipalle	74	74	100
165 Nunegundlapalle	232	63	168	1	27.2	72.4	0.4
166 Mahasamudram	848	607	234	7	71.6	27.6	0.8
167 Beripalle	98	98	100
168 Balijapalle	130	6	124	..	4.6	95.4	..
169 Mazarakothapalle	301	2	299	..	0.7	99.3	..
170 Mazarakandiga	51	..	51	100	..
171 Budithireddipalle	493	254	54	185	51.5	11.0	37.5
172 Chillagundlapalle	351	62	178	111	17.7	50.7	31.6
173 Mekalaguravayyapalle	58	1	57	..	1.7	98.3	..
174 Ramapuram	18	15	3	..	83.3	16.7	..
175 Kummrapalle	220	16	204	..	7.3	92.7	..

(iii) CHITTOOR TALUK—cont.

Code number and name of village or town.	Population.	Mother-tongue.					
		Absolute figures.			Percentage to total population.		
		Tamil.	Telugu.	Other languages.	Tamil.	Telugu.	Other languages.
(1)	(2)	(3)	(4)	(5)	(6)	(7)	(8)
176 Kurmayanipalle	333	14	319	..	4.2	95.8	..
177 Mordanapalle	312	42	270	..	13.5	86.5	..
178 Rollavari, palle	131	101	30	..	77.1	22.9	..
179 Kukkalapalle	1,609	453	1,127	29	28.2	70.0	1.8
180 Konapalle	1,073	481	572	20	44.8	53.3	1.9
181 Jangalapalle	926	318	576	32	34.3	62.2	3.5
182 Iruvaram	785	158	552	75	20.1	70.3	9.6
183 Greampet	385	23	349	13	6.0	90.6	3.4
184 Diguvamasapalle	2,350	952	1,398	..	40.5	59.5	..
185 Muttukur	934	685	249	..	73.3	26.7	..
186 Anagallu	491	278	213	..	56.6	43.4	..
187 Mukkalattur	1,350	396	937	17	29.3	69.4	1.3
188 Chinnavepanjeri	303	303	100
189 Bangareddipalle	304	..	297	7	..	97.7	2.3
190 Kattakin, apalle	126	119	7	..	94.4	5.6	..
191 Samsireddipalle	130	14	115	1	10.7	88.5	0.8
192 Venkatakrishnapuram (Uninhabited).
193 Manginayanikuppam	278	66	212	..	23.7	76.3	..
194 Gollapalle	192	16	176	..	8.3	91.7	..
195 Errabodireddipalle	226	76	150	..	33.6	66.4	..
196 Ramapuram (Uninhabited)
197 Tiruveedikuppam	332	4	328	..	1.2	98.8	..
198 Mahadevamangalam	815	526	284	5	64.5	34.9	0.6
199 Ambodarapalle	917	385	528	4	42.0	57.6	0.4
200 Pathapoliem	613	277	329	7	45.2	53.7	1.1
201 Thungundram	2,304	803	1,100	401	34.9	47.7	17.4
202 Madireddipalle	582	171	400	11	29.4	68.7	1.9
203 Adhikaripalle	216	105	111	..	48.6	51.4	..
204 Bommanchenu	318	144	174	..	45.3	54.7	..
205 Battukamakshampuram (Uninhabited).
206 Diguvapathapoliem (Uninhabited).
207 Eguvapathapoliem	158	72	73	13	45.6	46.2	8.2
208 Thallamadugu	21	..	21	100	..
209 Dalvaipalle	1,198	7	664	527	0.6	55.4	44.0
210 Mangamambapura Agraharam (Uninhabited).
211 Yadamari	3,560	1,188	2,182	190	33.4	61.3	5.3
212 Perimbadi	839	239	499	101	28.5	59.5	12.0
213 Madhavaram	1,072	420	652	..	39.2	60.8	..
214 Thimmasanipalle	470	214	252	4	45.5	53.6	0.9
215 Anupalle	560	17	458	85	3.0	81.8	15.2
216 Varadarajulapalle	172	57	161	14	33.1	58.7	8.2
217 Perumallakandiga (Uninhabited).
218 Gajulapalli	265	33	232	..	12.5	87.5	..
219 Narigapalli	722	286	435	1	39.6	60.3	0.1
220 Lakshmamapuram	642	297	345	..	46.3	53.7	..
221 Bandapalle	329	270	59	..	82.1	17.9	..
222 Masapalle	52	16	36	..	30.8	69.2	..
223 Venkatapuram	137	2	135	..	1.5	98.5	..
224 Guvvakallu	350	317	27	6	90.6	7.7	1.7
225 Siddampalle	131	38	93	..	29.0	71.0	..
226 Kannikapuram	220	28	192	..	12.7	87.3	..
227 Vengannakhandiga (Uninhabited).
228 Alivellapalle (Uninhabited)
229 Varadarajulapalle	91	..	91	100	..
230 Gollapalle	132	8	101	23	6.1	76.5	17.4

(iii) CHITTOOR TALUK—cont.

Code number and name of village or town.	Population.	Mother-tongue.					
		Absolute figures.			Percentage to total population.		
		Tamil.	Telugu.	Other languages.	Tamil.	Telugu.	Other languages.
(1)	(2)	(3)	(4)	(5)	(6)	(7)	(8)
231 Chintalagunta	459	243	216	..	52.9	47.1	..
232 Perumallakandigai	365	125	240	..	34.2	65.8	..
233 Talembedu	2,011	1,099	881	31	54.7	43.8	1.5
234 Jambugulampalle	171	149	22	..	87.1	12.9	..
235 Arthala	144	36	108	..	25.0	75.0	..
236 Venkatapuram	118	..	118	100	..
237 Kammapalle	186	4	182	..	2.2	97.8	..
238 Pachanapalle	605	464	141	..	76.7	23.3	..
239 Paloor	111	84	27	..	75.7	24.3	..
240 Palanthope	41	39	2	..	95.1	4.9	..
241 Iyanavēdu	142	39	103	..	27.5	72.5	..
242 Bakaranarasingraynipet	100	43	51	6	43.0	51.0	6.0
243 Athmakur	456	277	179	..	60.7	39.3	..
244 Kadapagunta	494	333	151	10	67.4	30.6	2.0
245 Balapuramchinniahkandigai (Uninhabited).
246 Murthinayanipalle	309	172	137	..	55.7	44.3	..
247 Rasimreddipalle	229	175	54	..	76.4	23.6	..
248 Avularangaiahpalle	202	174	28	..	86.1	13.9	..
249 Gollapalle	683	215	468	..	31.5	68.5	..
250 Kammapalle	545	4	282	259	0.7	51.8	47.5
251 Chennareddipalli	230	190	16	24	82.6	7.0	10.4
252 Kandiga	497	39	228	230	7.8	45.9	46.3
253 Motandeapalle	83	6	77	..	7.2	92.8	..
254 Boomireddipalle	711	155	555	1	21.8	78.1	0.1
255 Marlabanda	303	3	300	..	1.0	99.0	..
256 Votivaripalle	154	117	37	..	76.0	24.0	..
257 Mangalapalle (Uninhabited)
258 Kasiralla	916	91	803	22	9.9	87.7	2.4
259 Gollapalle	404	79	325	..	19.6	80.4	..
260 Nadimpalle	37	..	37	100	..
261 Vepanapalle	234	..	234	100	..
262 Krishnampalle	463	19	444	..	4.1	95.9	..
263 Dasarapalle	600	143	457	..	23.8	76.2	..
264 Perakur	346	10	329	7	2.9	95.1	2.0
265 Mapakshi	857	683	173	1	79.7	20.2	0.1
266 Seshachalapuram	248	217	27	4	87.5	10.9	1.6
267 Vuyyalachintha	168	9	159	..	5.4	94.6	..
268 Krishnareddikandigai (Uninhabited).
269 Ramasamudram (Uninhabited)
270 Mogaralapalle	1,376	531	836	9	38.6	60.8	0.6
271 Cheelapalle	1,315	654	607	54	49.7	46.2	4.1
272 Alukurpalle	114	19	95	..	16.7	83.3	..
273 Kurchivedu	980	434	427	119	44.3	43.6	12.1
274 Ananthapuram	452	322	121	9	71.2	26.8	2.0
275 Jangalapalle	141	23	118	..	16.3	83.7	..
276 Ellapalle	333	148	185	..	44.4	55.6	..
277 Gollavaripalle	269	140	129	..	52.0	48.0	..
278 Settiappanthangal	196	10	186	..	5.1	94.9	..
279 Thengal	466	466	100
280 Balekuppam	598	461	137	..	77.1	22.9	..
281 Pathavenkatapuram	350	196	154	..	56.0	44.0	..
282 Bojjinayanipalle	257	101	156	..	39.3	60.7	..
283 Narasapuram (Uninhabited)
284 Kothavenkatapuram	271	3	268	..	1.1	98.9	..
285 Agraharam	199	126	73	..	63.3	36.7	..

(iii) CHITTOOR TALUK—cont.

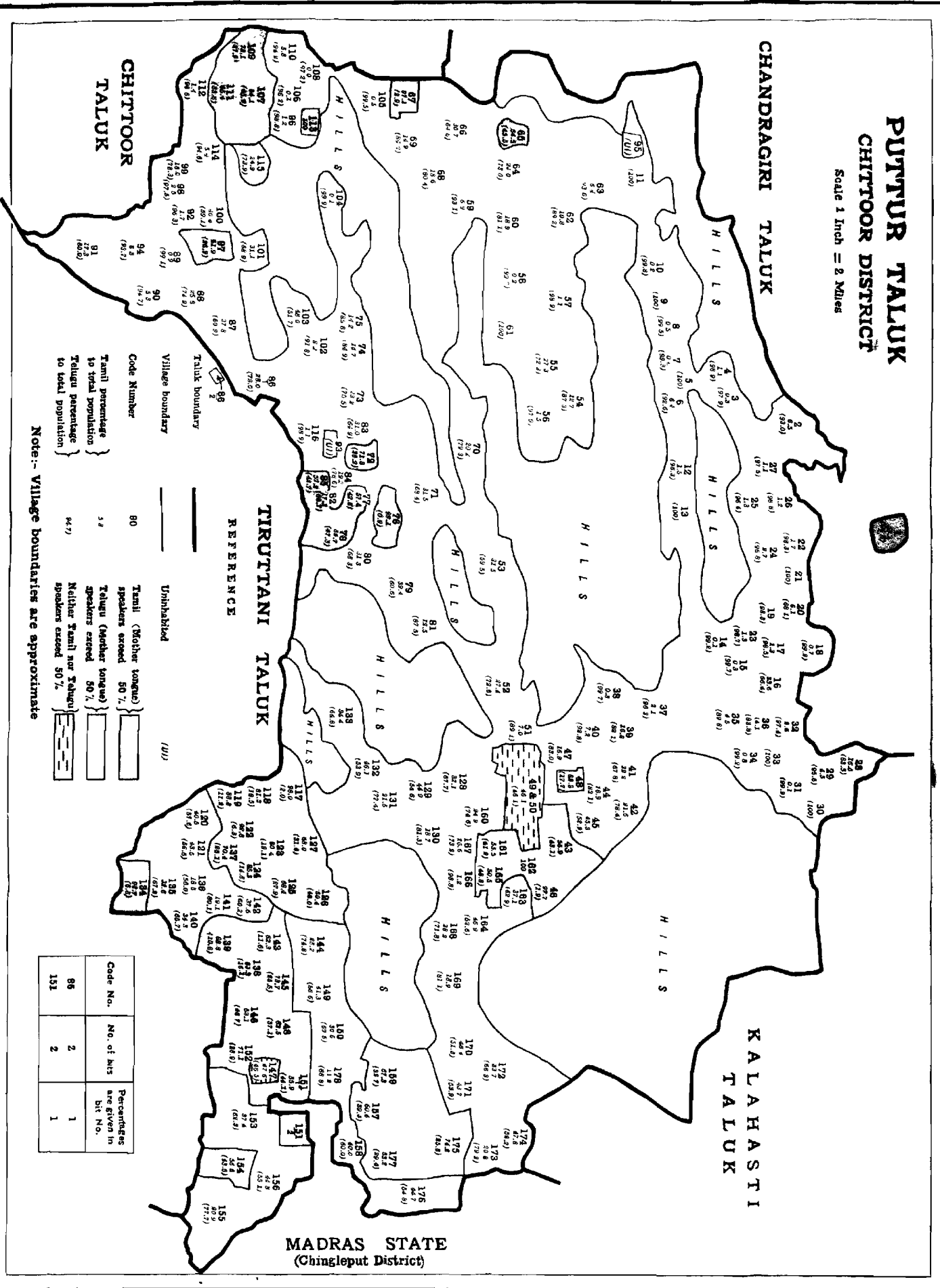
Code number and name of village or town.	Population.	Mother-tongue.					
		Absolute figures.			Percentage to total population.		
		Tamil.	Telugu.	Other languages.	Tamil.	Telugu.	Other languages.
(1)	(2)	(3)	(4)	(5)	(6)	(7)	(8)
286 Doddipalle	253	57	196	..	22.5	77.5	..
287 Gerigalapalle	164	17	147	..	10.4	89.6	..
288 Kanathalacheruvu	169	..	169	100	..
289 Bodaguttapalle	1,304	380	924	..	29.1	70.9	..
290 Dakshinapathapalle	2,070	1,525	536	9	73.7	25.9	0.4
291 Modipalle	17	..	17	100	..
292 Patrapalle	851	383	468	..	45.0	55.0	..
293 Siddareddipalle	360	..	360	100	..
294 Mudduramapuram	255	85	170	..	33.3	66.7	..
295 Puttavariipalle	1,887	1,172	704	11	62.1	37.3	0.6
296 Kammapalle	386	96	290	..	24.9	75.1	..
297 Rangasamudram	361	196	131	34	54.3	36.3	9.4
298 Vidyasankarapuram	214	145	69	..	67.8	32.2	..
299 Viludonapoliem	1,349	746	581	22	55.3	43.1	1.6
300 Varadaraddipalle	1,102	565	504	33	51.3	45.7	3.0
301 Veerisetipalle	3,482	2,033	1,146	303	58.4	32.9	8.7
302 Paradarami	3,585	2,422	966	197	67.6	26.9	5.5
303 Votivaripalle	325	..	325	100	..
304 Kotalam	1,018	269	749	..	26.4	73.6	..
305 Thumminda	1,411	258	1,017	136	18.3	72.1	9.6
306 Marrigunta	176	..	118	58	..	67.0	33.0
307 Peddisetipalle	257	2	245	10	0.8	95.3	3.9
308 Digoor	174	7	167	..	4.0	96.0	..
309 Nayanicheruvu	553	35	517	1	6.3	93.5	0.2
310 Thoppathapalle	167	..	167	100	..
311 Vobbanagunta	37	..	37	100	..
312 Jarrimadugu	143	5	138	..	3.5	96.5	..
313 Ramapuram	581	293	240	48	50.4	41.3	8.3
314 Buchannakhandigai	89	..	89	100	..
315 Dayamvariipalle	181	65	116	..	35.9	64.1	..
316 Krishnapuram	43	..	43	100	..
317 Chukkavaripalle	144	42	93	9	29.2	64.6	6.2
318 Ramabadrapuram	243	56	187	..	23.0	77.0	..
319 Mopurikannikapuram	141	85	55	1	60.3	39.0	0.7
320 Shro. Kothapalle	1,143	931	203	9	81.4	17.8	0.8
321 Chandrayanikandigai (Uninhabited)
322 Kilaripalle	348	295	53	..	84.8	15.2	..
323 Srirangamapalle	426	286	140	..	67.1	32.9	..
324 Kondapuram	62	10	52	..	16.1	83.9	..
325 Chembetikamathampalle	120	1	119	..	0.8	99.2	..
326 Muttukurupalle	237	29	207	1	12.2	87.4	0.4
327 Basavapalle	1,055	523	484	48	49.6	45.9	4.5
328 Vasanthapuram	849	210	629	10	24.7	74.1	1.2
329 Pasumanda	283	96	173	14	33.9	61.1	5.0
330 Kuppuganipalle	567	230	337	..	40.6	59.4	..
331 Bojjivaripalle	99	..	99	100	..
332 Buchannakhandigai	197	45	152	..	22.8	77.2	..
333 Ragimanipatteda	163	2	161	..	1.2	98.8	..
334 Thimmayyapalle	759	193	566	..	25.4	74.6	..
335 Bandarlappalle	54	1	53	..	1.9	98.1	..
336 Shro. Gollapalle	361	49	312	..	13.6	86.4	..
337 Ammavaripalle	237	144	93	..	60.8	39.2	..
338 Venkatalakshambapuram	116	21	75	20	18.1	64.7	17.2
339 Krishnajammapuram	200	4	196	..	2.0	98.0	..
340 Ramapuram	1,666	522	1,144	..	31.3	68.7	..
341 Kaiduganikhandigai	385	22	363	..	5.7	94.3	..
342 Venkatapuram	144	2	142	..	1.4	98.6	..
343 Inamati Vengamambapuram	340	229	111	..	67.4	32.6	..
344 Audilakshambapuram	453	25	428	..	5.5	94.5	..
345 Cheruvumundarakhandigai	173	..	173	100	..

(iii) CHITTOOR TALUK—cont.

Code number and name of village or town.	Population.	Mother-tongue.					
		Absolute figures.			Percentage to total population.		
		Tamil.	Telugu.	Other languages.	Tamil.	Telugu.	Other languages.
(1)	(2)	(3)	(4)	(5)	(6)	(7)	(8)
346 Naragallu	969	440	529	..	45.4	54.6	..
347 Venkatapuram	137	69	68	..	50.4	49.6	..
348 Krishnapuram	123	2	121	..	1.6	98.4	..
349 Bandaruvaripalle	53	34	15	4	64.2	28.3	7.5
350 Vengamanyanipuram	303	81	212	10	26.7	70.0	3.3
351 Kondamanayanipalem	340	189	151	..	55.6	44.4	..
352 Paramasattu	633	442	184	7	69.8	29.1	1.1
353 Madandakuppam	836	819	17	..	98.0	2.0	..
354 Gollapalle	983	699	284	..	71.1	28.9	..
355 Gudipala	2,093	436	1,634	23	20.8	78.1	1.1
356 Papasamudram	1,312	679	633	..	51.8	48.2	..
357 Bandlapalle	653	263	390	..	40.3	59.7	..
358 Chittapara	1,802	719	1,074	9	39.9	59.6	0.5
359 Bommasamudram	3,269	1,034	2,189	46	31.6	67.0	1.4
360 Nangamangalam	2,118	607	1,435	76	28.7	67.7	3.6
361 Dakshinabrahmanapalle	725	212	513	..	29.2	70.8	..
362 Marakalakuppam	982	347	621	14	35.4	63.2	1.4
363 Mahimandalam	3,319	2,378	875	66	71.6	26.4	2.0
364 Perumallakuppam	769	737	31	1	95.9	4.0	0.1
365 Erukambat	497	300	152	45	60.4	30.6	9.0
366 Vellimalai	892	719	152	21	80.6	17.0	2.4
367 Mandikrishnapuram	1,099	464	538	97	42.2	49.0	8.8
368 Mutharasikuppam	1,182	863	318	1	73.0	26.9	0.1
369 Vennampalle	2,209	842	1,366	1	38.1	61.8	0.1
370 Kodukkanthangal	1,139	1,025	85	29	90.0	7.5	2.5
371 Elayanellore	1,563	772	774	17	49.4	49.5	1.1
372 Thempalle	1,363	405	944	14	29.7	69.3	1.0
373 Sripadanellore	547	524	23	..	95.8	4.2	..
374 Veppalai	1,183	864	311	8	73.0	26.3	0.7
375 Melpadi	3,249	2,864	381	4	88.2	11.7	0.1
Village numbers not noted	230	68	156	6	29.6	67.8	2.6
Taluk total	340,917	120,307	205,358	15,252	35.3	60.2	4.5

PUTTUR TALUK CHITTOOR DISTRICT

Scale 1 Inch = 2 Miles



Village boundary
Taluk boundary
Unhabited

Code Number
Tamil (Mother tongue) speakers exceed 50%
Telugu (Mother tongue) speakers exceed 50%
Neither Tamil nor Telugu speakers exceed 50%

Code No.	No. of bits	Percentages are given in bit No.
86	2	1
151	2	1

MADRAS STATE
(Chingleput District)

(iv) PUTTUR TALUK.

Code number and name of village or town.	Population.	Mother-tongue.					
		Absolute figures.			Percentage to total population.		
		Tamil.	Telugu.	Other languages.	Tamil.	Telugu.	Other languages.
(1)	(2)	(3)	(4)	(5)	(6)	(7)	(8)
1 Yogimallavaram	424	235	189	..	55.4	44.6	..
2 Chuttuguntaramapuram	1,211	79	1,126	6	6.5	93.0	0.5
3 PrasannaVenkateswarapuram	1,419	4	1,389	26	0.3	97.9	1.8
4 Alimelumangathayamma Agraharam. Sanjeeviroyapuram	181	2	179	..	1.1	98.9	..
6 Royalachervu	674	43	624	7	6.4	92.6	1.0
7 Chittathoorkalepalle	1,385	6	1,375	4	0.4	99.3	0.3
8 Thimmarajupalle	414	2	412	..	0.5	99.5	..
9 Niluvaralla Kammappalle	770	..	770	100	..
10 Nethakuppam	1,658	3	1,655	..	0.2	99.8	..
11 Anupalle	1,880	..	1,880	100	..
12 Kuppambadur	2,548	39	2,454	55	1.5	96.3	2.2
13 Paramala	699	..	699	100	..
14 Seetharamapuram	2,265	3	2,246	16	0.1	99.2	0.7
15 Thirumanjyam	1,790	6	1,784	..	0.3	99.7	..
16 Vemapuram	571	192	379	..	33.6	66.4	..
17 Pathiputtur	2,260	30	2,225	5	1.3	98.5	0.2
18 Kayam	976	7	968	1	0.7	99.2	0.1
19 Ravillavaripalle	409	..	402	7	..	98.3	1.7
20 Pachikalva	182	11	124	47	6.1	68.1	25.8
21 Brahmanakalva	212	..	212	100	..
22 Sorakayalapalem	471	8	463	..	1.7	98.3	..
23 Lyyennagaripalli	314	4	310	..	1.3	98.7	..
24 Kammappalle	1,766	48	1,710	8	2.7	96.8	0.5
25 Nennur	1,954	25	1,884	45	1.3	96.4	2.3
26 Kattakindavenkatapuram	1,468	17	1,451	..	1.2	98.8	..
27 Nadavalloor	2,359	25	2,301	33	1.1	97.5	1.4
28 Kallur	553	91	462	..	16.5	83.5	..
29 Sribo nmarajapuram Agraharam.	510	23	487	..	4.5	95.5	..
30 Tatneri	285	..	285	100	..
31 Padiredu	1,200	1	1,199	..	0.1	99.9	..
32 Kadirimangalam	718	19	699	..	2.6	97.4	..
33 Ramasamudram	97	..	97	100	..
34 Vadsmala	950	8	942	..	0.8	99.2	..
35 Sri Venkataperumairajapuram	4,038	181	3,627	230	4.5	89.8	5.7
36 Pudi	666	94	558	14	14.1	83.8	2.1
37 Alimelumangapuram alias Abbi Kandigai.	1,354	28	1,304	22	2.1	96.3	1.6
38 Sri Bommarajapuram	1,778	5	1,773	..	0.3	99.7	..
39 Taduku	1,366	230	1,121	15	16.8	82.1	1.1
40 Sirugarajapalayam	514	37	477	..	7.2	92.8	..
41 Venugopalapuram	385	124	261	..	32.2	67.8	..
42 Anambattu	88	19	69	..	21.6	78.4	..
43 Nesanoor	2,322	1,321	1,001	..	56.9	43.1	..
44 Gollapalli	266	45	221	..	16.9	83.1	..
45 Thorur	2,601	1,177	1,376	48	45.3	52.9	1.8
46 Gangamambapuram	262	256	5	1	97.7	1.9	0.4
47 Eswarapuram	1,581	268	1,312	1	16.9	83.0	0.1
48 Kaverimaharajapuram Agraharam.	96	79	17	..	82.3	17.7	..
49 Puttur (Non-City Urban)	7,972	3,676	3,678	618	46.1	46.1	7.8
50 Govindapalem (included in village No. 49).
51 Cherlopalli	1,572	110	1,400	62	7.0	89.1	3.9
52 Surendranagar	1,186	325	861	..	27.4	72.6	..
53 Karvetinagar	6,041	1,902	3,595	544	31.5	59.5	9.0
54 Mambedu	2,481	314	2,166	1	12.7	87.3	..
55 Pachikapalem	2,227	608	1,607	12	27.3	72.2	0.5
56 Thirumalakondamambapuram	865	13	847	5	1.5	97.9	0.6
57 Komaragunta	1,633	18	1,615	..	1.1	98.9	..
58 Vedurukuppam	1,763	4	1,758	1	0.2	99.7	0.1
59 Perumallapalle	697	48	649	..	6.9	93.1	..
60 Marepalle	524	99	425	..	18.9	81.1	..

(iv) PUTTUR TALUK—cont.

Code number and name of village or town.	Population.	Mother-tongue.					
		Absolute figures.			Percentage to total population.		
		Tamil.	Telugu.	Other languages.	Tamil.	Telugu.	Other languages.
(1)	(2)	(3)	(4)	(5)	(6)	(7)	(8)
61 Erramarajupalle	946	..	946	100	..
62 Mondivenganapalle	1,070	116	954	..	10.8	89.2	..
63 Brahamanapalle	1,718	110	1,608	..	6.4	93.6	..
64 Pathagun'a	2,159	518	1,576	65	24.0	73.0	3.0
65 Kaverimaharaja Agraharam	352	192	160	..	54.5	45.5	..
66 Veperi	1,538	472	993	73	30.7	64.6	4.7
67 Vavilchenu	103	100	3	..	97.1	2.9	..
68 Chenchugudi	1,764	329	1,418	17	18.6	81.4	1.0
69 Venugopalapuram	1,602	239	1,349	14	14.9	84.2	0.9
70 Thirumalakondamabagaripeta	1,690	342	1,340	8	20.2	79.3	0.5
71 Rajakumaravenkata Porumalraju Babadurvaripeta.	2,661	837	1,820	4	31.5	68.4	0.1
72 Anoor	1,658	1,190	468	..	71.8	28.2	..
73 Katherapalle	1,392	323	1,051	18	23.2	75.5	1.3
74 Ammapalle	1,236	182	1,049	5	14.7	84.9	0.4
75 Kesavarajapuram Agraharam	702	100	602	..	14.2	85.8	..
76 Lakshmpuram	116	115	1	..	99.1	0.9	..
77 Krishnasamudram	249	143	106	..	57.4	42.6	..
78 Lakshmarajupet	1,297	683	614	..	52.7	47.3	..
79 Kotumal maharajapuram	1,837	723	1,114	..	39.4	60.6	..
80 Kotarvedu	1,415	443	967	5	31.3	68.3	0.4
81 Damodaramaharajapuram	1,834	229	1,605	..	12.5	87.5	..
82 Eduvaripalle	260	45	215	..	17.3	82.7	..
83 Alathoor	1,139	353	739	47	31.0	64.9	4.1
84 Edigapalle	546	105	429	12	19.2	78.6	2.2
85 Kollagunta	1,651	944	706	1	57.2	42.7	0.1
86 Kshirasamudram	1,135	318	817	..	28.0	72.0	..
87 Srirangarajapuram	1,524	576	928	20	37.8	60.9	1.3
88 Ambaramaharajapuram	899	232	667	..	25.8	74.2	..
89 Narsimbarajapuram	442	4	438	..	0.9	99.1	..
90 Padmapuram	412	22	390	..	5.3	94.7	..
91 Pullur	1,477	255	1,182	40	17.3	80.0	2.7
92 Settivanatham	657	11	633	13	1.7	96.3	2.0
93 Nemmanerikandrigai (Uninhabited).
94 Venugopalapuram	799	50	749	..	6.3	93.7	..
95 Soorapuram (Uninhabited)
96 Garampalle	170	2	168	..	1.2	98.8	..
97 Jangalapalle	428	265	115	48	61.9	26.9	11.2
98 Peddakondepalli	201	5	196	..	2.5	97.5	..
99 Vilasavarahapuram	253	47	198	8	18.6	78.3	3.1
100 Thayyur	1,624	656	960	8	40.4	59.1	0.5
101 Pillarikuppam	972	302	670	..	31.1	68.9	..
102 Chillumakulapalle	601	49	552	..	8.2	91.8	..
103 Venkatapuram	1,570	754	811	5	48.0	51.7	0.3
104 Allamadugu	1,707	1	1,706	..	0.1	99.9	..
105 Devaragudipalli	405	2	403	..	0.5	99.5	..
106 Bommaiahpalle	1,769	1	1,702	66	0.1	96.2	3.7
107 Thippinaidupalle	1,831	990	841	..	54.1	45.9	..
108 Thettuguntapalle	108	..	105	3	..	97.2	2.8
109 Mairripalle Dakshinapukandiga	477	344	133	..	72.1	27.9	..
110 Mairripalle Uttarapukandiga	206	12	194	..	5.8	94.2	..
111 Kothapalle	1,634	1,068	549	17	65.4	33.6	1.0
112 Kotarlapalle	287	4	283	..	1.4	98.6	..
113 Guntipalle	3	3	100
114 Arimakulapalle	241	13	228	..	5.4	94.6	..
115 Mangunta	918	229	678	11	24.9	73.9	1.2
116 Battuvaripalle	89	1	88	..	1.1	98.9	..
117 Adivikothur	1,271	1,246	25	..	98.0	2.0	..
118 Satravada	3,601	2,929	664	8	81.3	18.5	0.2
119 Mittapalem	845	750	95	..	88.8	11.2	..
120 Mudipalle	1,945	787	1,121	37	40.5	57.6	1.9

(iv) PUTTUR TALUK—cont.

Code number and name of village or town.	Population.	Mother-tongue:					
		Absolute figures.			Percentage to total population.		
		Tamil.	Telugu	Other languages.	Tamil.	Telugu.	Other languages.
(1)	(2)	(3)	(4)	(5)	(6)	(7)	(8)
121 Melapattu	909	395	514	..	43.5	56.5	..
122 Therani	2,696	2,501	169	26	92.8	6.3	0.9
123 Ekambrakuppam	2,457	1,976	470	11	80.4	19.1	0.5
124 Salavappatteda	256	218	38	..	85.2	14.8	..
125 Nagari (Non-City Urban)	6,503	4,448	1,815	240	68.4	27.9	3.7
126 Kakavedu	1,207	608	579	20	50.4	48.0	1.6
127 Gundrajukuppam	4,050	2,753	1,290	7	68.0	31.8	0.2
128 Nandimangalam	2,139	686	1,449	4	32.1	67.7	0.2
129 Alimelumangapuram alias Vepagunta.	2,279	1,024	1,244	11	44.9	54.6	0.5
130 Parameswaramangalam	1,700	318	1,382	..	18.7	81.3	..
131 Ramasamudram	734	158	568	8	21.5	77.4	1.1
132 Thirumalakuppam	2,355	1,085	1,270	..	46.1	53.9	..
133 Kumarabommarajapuram	1,817	624	1,178	15	34.4	64.8	0.8
134 Gopalakrishnapuram	142	133	9	..	93.7	6.3	..
135 Thaduku	1,657	541	1,113	3	32.6	67.2	0.2
136 Veerakaverirajapuram	1,076	199	603	274	18.5	56.0	25.5
137 Keelapattu	1,443	1,015	406	22	70.4	28.1	1.5
138 Sri Venkataperumalrajapuram alias Kavettipuram.	322	270	52	..	83.9	16.1	..
139 Nagarajakuppam	859	763	93	3	88.8	10.8	0.4
140 Kanniakapuram	178	61	117	..	34.3	65.7	..
141 Thirumalrajukandiga	371	71	297	3	19.1	80.1	0.8
142 Sriranganagara Agraharam	603	227	363	13	37.6	60.2	2.2
143 Velavadi	647	403	75	169	62.3	11.6	26.1
144 Mangadu	1,931	486	1,445	..	25.2	74.8	..
145 Bugga Agraharam	239	176	61	2	73.7	25.5	0.8
146 Damarapakkam	1,333	694	623	16	52.1	46.7	1.2
147 Padiri	1,192	567	554	71	47.6	46.5	5.9
148 Agaram	2,116	1,322	785	9	62.5	37.1	0.4
149 Iruguvai	2,487	1,027	1,458	2	41.3	58.6	0.1
150 Aroor	1,868	569	1,299	..	30.5	69.5	..
151 Koonamarajupalam	1,134	634	500	..	55.9	44.1	..
152 Kalikapuram	592	421	171	..	71.1	28.9	..
153 Buchivanatham	1,708	638	1,064	6	37.4	62.3	0.3
154 Pannoor	1,998	1,129	869	..	56.5	43.5	..
155 Jagannathapuram	954	199	741	14	20.9	77.7	1.4
156 Kaliambakam	1,404	629	773	2	44.8	55.1	0.1
157 Chavarambakkam	1,002	607	395	..	60.6	39.4	..
158 Kaacharavedu	1,058	423	635	..	40.0	60.0	..
159 Elakatoor	2,005	1,350	655	..	67.3	32.7	..
160 Veerappareddipalem	1,086	271	810	5	24.9	74.6	0.5
161 Narayanavaram	7,527	4,249	3,102	176	56.5	41.2	2.3
162 Erikambattu	1,202	1,202	100
163 Thiruvattiyam	517	192	325	..	37.1	62.9	..
164 Keelagaram	1,447	679	761	7	46.9	52.6	0.5
165 Venkatakrishnapalem	695	351	329	5	50.5	48.8	0.7
166 Samudayam	592	7	585	..	1.2	98.8	..
167 Kasimmita	995	265	728	2	26.6	73.2	0.2
168 Bopparajupalayam	408	115	293	..	28.2	71.8	..
169 Aranyamkandiga	2,122	402	1,720	..	18.9	81.1	..
170 Thumbur	2,677	1,294	1,374	9	48.4	51.3	0.3
171 Palamangalam Dakshinapu kandigai.	1,287	563	693	31	43.7	53.9	2.4
172 Palamangalam Utharapu kandiga	1,305	440	865	..	33.7	66.3	..
173 Sriramapuram	1,016	211	805	..	20.8	79.2	..
174 Kavanoor	1,361	651	710	..	47.8	52.2	..
175 Koppeduacharyulu kandiga	1,067	792	275	..	74.2	25.8	..
176 Keelapudi	1,540	689	843	8	44.7	54.8	0.5
177 Nindra	2,189	1,383	643	163	63.2	29.4	7.4
178 Netteri	472	53	419	..	11.2	88.8	..
Village numbers not noted	191	56	135	..	29.3	70.7	..
Taluk Total	229,566	77,886	147,936	3,744	33.9	64.5	1.6

TIRUTANI TALUK

CHITTOOR DISTRICT

Scale 1 Inch = 2 Miles

MADRAS STATE
(Chingleput Dist.)
(Tiruvallur Tk.)

TALUK

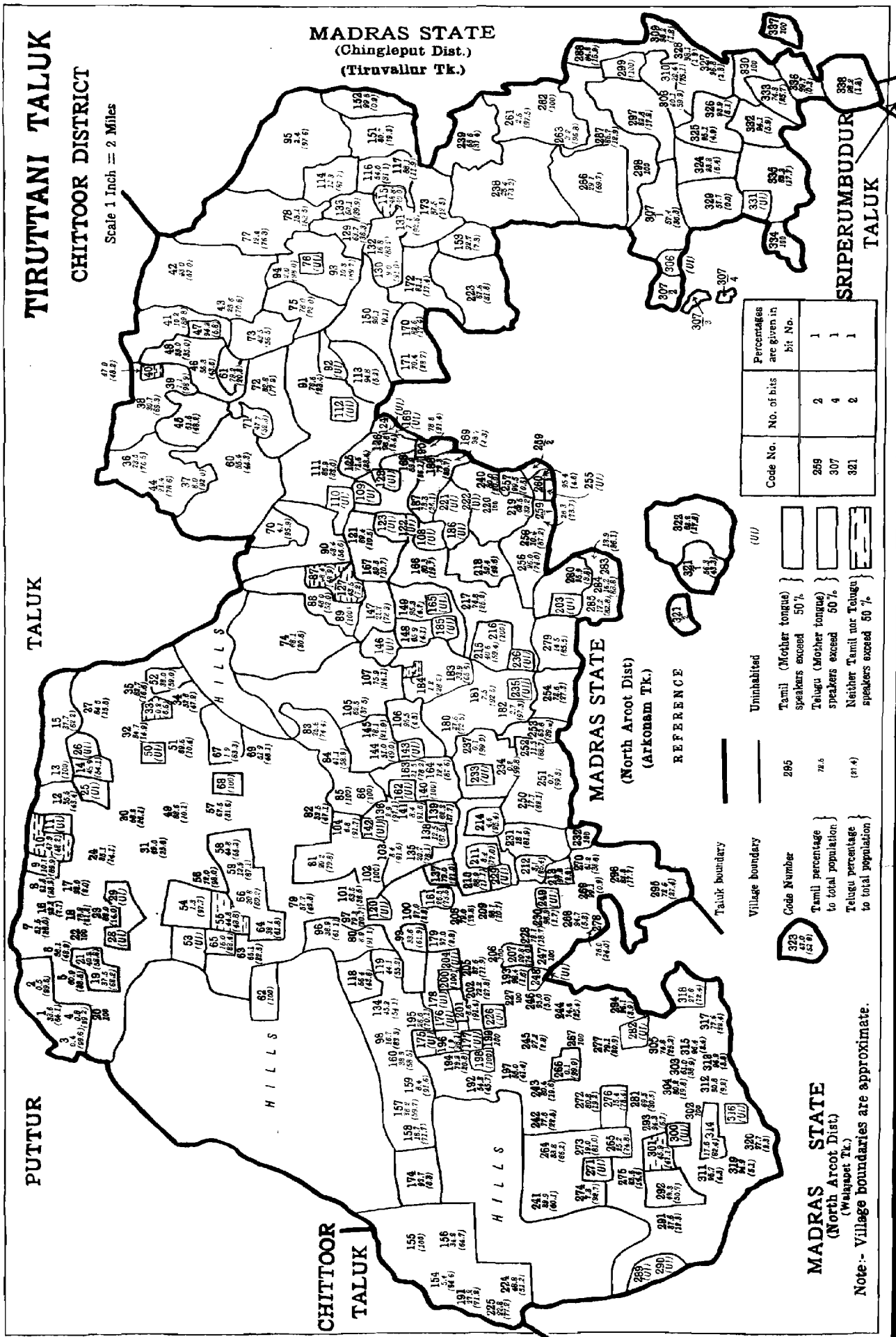
PUTTUR

CHITTOOR TALUK

MADRAS STATE
(North Arcot Dist.)
(ARCONAM TK.)

MADRAS STATE
(North Arcot Dist.)
(Waipacet Tk.)

SRIPERUMBUDUR TALUK



Code No.	No. of bits	Percentages are given in bit No.
259	2	1
307	4	1
321	2	1

Code Number	Tamil percentage to total population	Telugu percentage to total population	Uninhabited
295			Tamil (Mother tongue) speakers exceed 50%
285			Telugu (Mother tongue) speakers exceed 50%
(314)			Neither Tamil nor Telugu speakers exceed 50%

Note - Village boundaries are approximate.

(v) TIRUTTANI TALUK.

Code number and name of village or town.	Population.	Mother tongue.					
		Absolute figures.			Percentage to total population		
		Tamil.	Telugu.	Other languages.	Tamil.	Telugu.	Other languages.
(1)	(2)	(3)	(4)	(5)	(6)	(7)	(8)
1 Muddikuppam	615	207	394	14	33.6	64.1	2.3
2 Chokkamadugu	214	1	213	..	0.5	99.5	..
3 Anantharajapuram	260	1	259	..	0.4	99.6	..
4 Nelavoi	367	3	364	..	0.8	99.2	..
5 Veligaram	1,366	832	526	8	60.9	33.5	0.6
6 Melkalpatteda	41	23	18	..	56.1	43.9	..
7 Pallipat	3,118	1,607	1,185	326	51.5	38.0	10.5
8 Surarajupatteda	484	299	185	..	61.8	38.2	..
9 Rangepalle	414	42	372	..	10.1	89.9	..
10 Kolathur	2,513	1,203	1,211	99	47.9	48.2	3.9
11 Kolathur-Ramiakhandriga (Uninhabited).
12 Nediya	1,426	791	619	16	55.5	43.4	1.1
13 Aravasipatteda	117	..	117	100	..
14 Samanthavada	460	211	249	..	45.9	54.1	..
15 Karimbodu	1,747	659	1,086	2	37.7	62.2	0.1
16 Kesavarajapuram	168	155	13	..	92.3	7.7	..
17 Ramachandrapuram	299	293	6	..	98.0	2.0	..
18 Chinnatimarajupatteda	165	129	36	..	78.2	21.8	..
19 Venkatarajukuppam	1,728	648	1,074	6	37.5	62.2	0.3
20 Sangeethakuppam	94	94	100
21 Thirumalrajupet	592	238	348	6	40.2	58.8	1.0
22 Tirunadharajapuram	253	253	100
23 Kumararajupeta	1,130	972	158	..	86.0	14.0	..
24 Melapudi	3,909	3,327	549	33	85.1	14.1	0.8
25 Reddipalli Subbaraokhandriga (Uninhabited).
26 Puranam Sanjeevirayunikhandriga (Uninhabited).
27 Punyam	1,196	1,011	185	..	84.5	15.5	..
28 Patnam Seshayyakhandriga (Uninhabited).
29 Kadapanthangal (Uninhabited)
30 Kaverirajupeta alias Sri Kaverirajulungaripet.	765	445	200	120	58.2	26.1	15.7
31 Bommarajupeta	1,064	734	275	55	69.0	25.8	5.2
32 Gollalakuppam	255	216	38	1	84.7	14.9	0.4
33 Chandrapannaidukhandriga	479	1	41	437	0.2	8.6	91.2
34 Chinnamudipalli	195	103	92	..	52.8	47.2	..
35 Kesavarajukuppam	1,072	887	178	7	82.7	16.6	0.7
36 Kuthareddi Gollalakuppam	536	126	410	..	23.5	76.5	..
37 Krishnapuram	427	34	393	..	8.0	92.0	..
38 Kothurvenkatapuram	1,155	355	800	..	30.7	69.3	..
39 Agaram	793	9	784	..	1.1	98.9	..
40 Vijayaraghavapuram Agraharam (included in village No. 10).
41 Mangalam	1,402	143	1,259	..	10.2	89.8	..
42 Kshoorikapuram	846	364	482	..	43.0	57.0	..
43 Vijayapuram	2,093	598	1,479	16	28.6	70.6	0.8
44 Oranthangal Gollalakuppam	826	177	649	..	21.4	78.6	..
45 Nallattur	1,989	1,027	959	3	51.6	48.2	0.2
46 Chivvada	1,705	961	743	1	56.3	43.6	0.1
47 Siddanthipuram	345	325	20	..	94.2	5.8	..
48 Kondapuram	60	39	21	..	65.0	35.0	..
49 Proddatturpet (Non-City Urban).	8,210	7,272	826	112	88.6	10.1	1.3
50 Ragimanukhandrigai (Uninhabited).

(v) TIRUTTANI TALUK—cont.

Code number and name of village or town.	Population.	Mother-tongue.					
		Absolute figures.			Percentage to total population.		
		Tamil.	Telugu.	Other languages.	Tamil.	Telugu.	Other languages.
(1)	(2)	(3)	(4)	(5)	(6)	(7)	(8)
51 Pandravedu	1,448	1,297	151	..	89.6	10.4	..
52 Gantavarikuppam	100	38	59	3	38.0	59.0	3.0
53 Sitaramapuram (Uninhabited)
54 Vadakuppam	765	10	747	8	1.3	97.7	1.0
55 Karjambakkam	763	342	334	87	44.8	43.8	11.4
56 Konasamudram	1,153	830	323	..	72.0	28.0	..
57 Kakalur	538	363	170	5	67.5	31.6	0.9
58 Vengalrajukuppam	174	78	96	..	44.8	55.2	..
59 Ramapuram	202	26	176	..	12.9	87.1	..
60 Poonimangadu	2,102	1,165	931	6	55.4	44.8	0.3
61 Venkatapura Agraharam	207	164	43	..	79.2	20.8	..
62 Vanadurgapuram	690	..	690	100	..
63 Kodivalasa	3,552	2,312	1,154	86	65.1	32.5	2.4
64 Athimanjeri	926	353	572	1	38.1	61.8	0.1
65 Venkatapuram	701	112	585	4	16.0	83.4	0.6
66 Kothakuppam	850	262	588	..	30.8	69.2	..
67 Petakandriga	589	11	491	87	1.9	83.3	14.8
68 Jangalapalli	544	..	544	100	..
69 Nodigallu	1,510	784	726	..	51.9	48.1	..
70 Ponbadi Gollakuppam	469	19	450	..	4.1	95.9	..
71 Kodanda Ramapuram	595	284	311	..	47.7	52.3	..
72 Nemali	2,006	1,660	346	..	82.8	17.2	..
73 Illathur	1,054	459	595	..	43.5	56.5	..
74 Madduru	3,415	2,325	1,045	45	68.1	30.6	1.3
75 Arumbakam	1,222	953	269	..	78.0	22.0	..
76 Thirumalarajapuram Dakshinapukandiga (Uninhabited).
77 Kosalanagaram	830	103	633	94	12.4	76.3	11.3
78 Kesavapuram	363	55	303	5	15.1	83.5	1.4
79 Chiana Athimanjeri	71	41	30	..	57.7	42.3	..
80 Siddiraju Rangarajukhandriga	281	25	256	..	8.9	91.1	..
81 Nochili	1,588	321	1,267	..	20.2	79.8	..
82 Keechalam	1,119	588	527	4	52.5	47.1	0.4
83 Ramasamudram	450	115	335	..	25.6	74.4	..
84 Ulchiguruvarajukhandriga	236	97	139	..	41.1	58.9	..
85 Konugarikuppam	132	..	132	100	..
86 Gownipuram Badrarajukhandriga.	257	..	257	100	..
87 Alimelumangapuram	733	355	358	20	48.4	48.9	2.7
88 Singarapuram	594	285	309	..	48.0	52.0	..
89 Thayamambapuram	50	..	50	100	..
90 Pompadi alias Pommadi	1,041	452	589	..	43.4	56.6	..
91 Arungolam	2,351	1,800	551	..	76.6	23.4	..
92 Thirukkalamkhandriga (Uninhabited).
93 Patha Arcot	1,102	113	989	..	10.3	89.7	..
94 Thirumalarajapuram Uttarapukhandriga.	787	16	771	..	2.0	98.0	..
95 Sreeharipuram	2,097	51	2,046	..	2.4	97.6	..
96 Simharapuram	440	171	269	..	38.9	61.1	..
97 Korakuppam	271	215	56	..	79.3	20.7	..
98 Balagopalapuram	18	3	15	..	16.7	83.3	..
99 Narasampeta	155	52	96	7	33.6	61.9	4.5
100 Rajanagaram Santhayatham	1,746	1,694	48	4	97.0	2.8	0.2
101 Kannikambapuram	334	212	122	..	63.5	36.5	..
102 Balakrishnapuram	139	..	139	100	..
103 Dwarakapuram	83	7	76	..	8.4	91.6	..
104 Krishnamarajukuppam	399	27	366	6	6.8	91.7	1.5
105 Venugopalapuram	291	182	109	..	62.5	37.5	..

(v) TIRUTTANI TALUK—cont.

Code number and name of village or town.	Population.	Mother-tongue.					
		Absolute figures.			Percentage to total population.		
		Tamil.	Telugu.	Other languages.	Tamil.	Telugu.	Other languages.
(1)	(2)	(3)	(4)	(5)	(6)	(7)	(8)
106 Royasam Venkatakrishnayya khandriga.	269	257	12	..	95.5	4.5	..
107 Krishnasamudram	3,621	2,748	873	..	75.9	24.1	..
108 Dharanivarahapuram (Uninhabited).
109 Tiruvengalanadharapuram (Uninhabited).
110 Ramachandrapuram (Uninhabited).
111 Talavedu	1,910	1,278	630	2	66.9	33.0	0.1
112 Narayanasamudram Agraharam (Uninhabited).
113 Mamandur	853	809	44	..	94.8	5.2	..
114 Maharapuram	692	85	607	..	12.3	87.7	..
115 Nekkniagraram	170	83	68	19	48.8	40.0	11.2
116 Nekkinipeta	682	368	212	102	54.0	31.1	14.9
117 Venugopalakrishnapuram ..	168	148	20	..	88.1	11.9	..
118 Srikaverirapuram	1,122	633	489	..	56.4	43.6	..
119 Krishnajimmapuram	964	425	532	7	44.1	55.2	0.7
120 Balakrishnapuram (Uninhabited).
121 Murukambattu	1,703	1,522	179	2	89.4	10.5	0.1
122 Gajarapuram (Uninhabited)
123 Subramanyapuram (Uninhabited).
124 Ramachandrapuram (Uninhabited).
125 Sathrunjayapuram	394	282	112	..	71.6	28.4	..
126 Medinipuram	178	172	6	..	96.6	3.4	..
127 Srinivasapuram	704	306	51	347	43.5	7.2	49.3
128 Srinivasayya khandriga (Uninhabited).
129 Nedambaram	926	590	336	..	63.7	36.3	..
130 Raghunadhapuram	245	22	223	..	9.0	91.0	..
131 Sithapuram	54	4	50	..	7.4	92.6	..
132 Patramthangal	131	22	109	..	16.8	83.2	..
133 Panapakkam	1,292	777	515	..	60.1	39.9	..
134 Palasamuduram	2,058	930	1,114	14	45.2	54.1	..
135 Gownipuram Chinnasubbaraju khandriga.	425	88	332	5	20.7	78.1	1.2
136 Siddayyagunta khandriga ..	172	5	167	..	2.9	97.1	..
137 Madirajuperumalraju khandriga.	200	158	42	..	79.0	21.0	..
138 Elavarthimummalaraju khandriga.	345	43	302	..	12.5	87.5	..
139 Chiralagurrappa khandriga ..	379	236	143	..	62.3	37.7	..
140 Nallur Perumalraju khandriga ..	74	..	74	100	..
141 Uchirangaraju khandriga ..	167	14	153	..	8.4	91.6	..
142 Chinthalagunta khandriga (Uninhabited).
143 Nalluru Venkataraju khandriga (Uninhabited).
144 Sirugumi	1,417	722	695	..	51.0	49.0	..
145 Veeranaidupalem	210	164	46	..	78.1	21.9	..
146 Rajakallarapuram (Uninhabited).
147 Suryanagaram	797	173	624	..	21.7	78.3	..
148 Shotriam Bommarapuram ..	218	209	9	..	95.9	4.1	..
149 Tekkular	966	921	45	..	95.3	4.7	..
150 Arcotkuppam	2,559	2,305	233	21	90.1	9.1	0.8
151 Guler	1,245	1,005	240	..	80.7	19.3	..
152 Kanjipadi	991	989	2	..	99.8	0.2	..
153 Rangapuram	370	343	27	..	92.7	7.3	..
154 Kaverirapuram	166	9	157	..	5.4	94.6	..
155 Santhayathamkothakhandriga ..	94	..	94	100	..

(v) TIRUTTANI TALUK—cont.

Code number and name of village or town.	Population.	Mother-tongue.					
		Absolute figures.			Percentage to total population.		
		Tamil.	Telugu.	Other languages.	Tamil.	Telugu.	Other languages.
(1)	(2)	(3)	(4)	(5)	(6)	(7)	(8)
156 Amudala	935	320	605	10	34.2	64.7	1.1
157 Ramalingapuram	466	178	278	10	38.2	59.7	2.1
158 Kannikapuram	198	37	142	19	18.7	71.7	9.6
159 Mahadevapuram	107	9	98	..	8.4	91.6	..
160 Vengalrajukuppam	691	269	404	18	38.9	58.5	2.6
161 Singasamudram	283	75	208	..	26.5	73.5	..
162 Perumkanobi Narasimhuni khandriga (Uninhabited).
163 Veerakaverirajapuram	761	164	595	2	21.5	78.2	0.3
164 Erramasetti Narasimhuni khandriga.	161	20	141	..	12.4	87.6	..
165 Kumara Bommarajapuram (Uninhabited).
166 Chengalvapuram Agraharam ..	416	334	82	..	80.3	19.7	..
167 Dharanivarehapuram	888	793	95	..	89.3	10.7	..
168 Velanjeri	1,632	1,043	589	..	63.9	36.1	..
169 Srinivasapuram (Uninhabited)
170 Nabaloor	979	809	170	..	82.6	17.4	..
171 Kunnathur	425	299	122	4	70.4	28.7	0.9
172 Illupur	725	588	126	11	81.1	17.4	1.5
173 Muddukondapuram	1,445	1,265	180	..	87.5	12.5	..
174 Lakshminarasimhapuram	222	208	14	..	93.7	6.3	..
175 Sandayatham Anjaneyapuram (Uninhabited).
176 Anjaneyapuram (Uninhabited)
177 Javvajiveripalli (Uninhabited)
178 Pakala Narayana Reddikhandriga (Uninhabited).
179 Rajanagaram (included in village No. 100).
180 Thaduru	1,162	319	843	..	27.5	72.5	..
181 Talari Thengal	173	13	160	..	7.5	92.5	..
182 Errappanai dukhandriga	295	8	287	..	2.7	97.3	..
183 Veerakanellore	699	237	458	4	33.9	65.5	0.6
184 Netterikhandriga	957	11	270	676	1.2	28.2	70.6
185 Makamambapuram (Uninhabited).
186 Narayanapuram (Uninhabited)
187 Kasinadhapuram	632	463	165	4	73.3	26.1	0.6
188 Pattabiramapuram	463	367	96	..	79.3	20.7	..
189 Velayudakuppam	225	222	3	..	98.7	1.3	..
190 Vinayakapuram	332	261	71	..	78.6	21.4	..
191 Puttur	309	84	220	5	27.2	71.2	1.6
192 Kadanaganagaram	495	269	226	..	54.3	45.7	..
193 Yagnapuram	187	184	3	..	98.4	1.6	..
194 Janakarakuppam	539	427	112	..	79.2	20.8	..
195 Matavalam	281	73	197	11	26.0	70.1	3.9
196 Anandhavallipuram	53	1	52	..	1.9	98.1	..
197 Tyagapuram	251	138	104	9	55.0	41.4	3.6
198 Mohinipuram	21	..	21	100	..
199 Appukondayyakhandriga	74	74	100
200 Mutyalavaripalle	37	..	37	100	..
201 Lakshmiapuram	139	12	127	..	8.6	91.4	..
202 Raghavanai dukuppam	540	390	150	..	72.2	27.8	..
203 Ayyavarinaidu khandriga (Uninhabited).
204 Kondapuram (Uninhabited)
205 Ammavarikuppam	3,961	3,465	471	25	87.5	11.9	0.6

(v) TIRUTTANI TALUK—*cont.*

Code number and name of village or town.	Population.	Mother-tongue.					
		Absolute figures.			Percentage to total population.		
		Tamil.	Telugu.	Other languages.	Tamil.	Telugu.	Other languages.
(1)	(2)	(3)	(4)	(5)	(6)	(7)	(8)
206 Narayanapuram	287	287	100
207 Mosur	77	16	57	4	20.8	74.0	5.2
208 Vanganur	3,124	2,467	618	39	79.0	19.8	1.2
209 Krishnakuppam	478	424	51	3	88.7	10.7	0.6
210 Chengalvarayudukhandriga ..	425	378	47	..	88.9	11.1	..
211 Sirigirirajubadrarakujhandriga ..	226	19	174	33	8.4	77.0	14.6
212 Madurapuram	287	9	245	33	3.1	85.4	11.5
213 Changareddi Narayanareddi-khandriga.	139	136	3	..	97.8	2.2	..
214 Santhana Venugopalapuram ..	196	9	187	..	4.6	95.4	..
215 Koramangalam	761	309	452	..	40.6	59.4	..
216 Pratapa Uddandamakarapuram.	81	..	81	100	..
217 Agoor	1,280	957	323	..	74.8	25.2	..
218 Amruthapuram	692	349	343	..	50.4	49.6	..
219 Tiruttani (Non-City Urban) ..	9,912	6,192	3,192	528	62.5	32.2	5.3
220 Tiruttani (Rural)	417	417	100
221 Meldevadhanam (Uninhabited)
222 Keeldevadhanam (Uninhabited).
223 Ramapuram	1,197	812	380	5	67.8	31.8	0.4
224 Balakrishnapuram	445	217	228	..	48.8	51.2	..
225 Ramakrishnapuram	158	36	122	..	22.8	77.2	..
226 Kaveripuram (Uninhabited)
227 Khandapuram	379	379	100
228 Ramakrishnarajupet	2,945	2,301	550	94	78.1	18.7	3.2
229 Bhadrarakujhandriga (Uninhabited).
230 Srikrishnapuram	297	292	5	..	98.3	1.7	..
231 Thummaleruvukhandriga ..	772	140	632	..	18.1	81.9	..
232 Maharapuram	19	19	100
233 Akkachikuppam (Uninhabited)
234 Beerakuppam	646	1	645	..	0.2	99.8	..
235 Perumalmanyamkhandriga (Uninhabited).
236 Veerakaverirapuram (Uninhabited).
237 Kanchiguruvarajakhandriga ..	815	1	814	..	0.1	99.9	..
238 Kaverirapuram	1,711	435	1,252	24	25.4	73.2	1.4
239 Kurmavilasapuram	1,053	722	331	..	68.6	31.4	..
240 Devaseapuram	5	4	1	..	80.0	20.0	..
241 Narasimhapuram	1,203	480	723	..	39.9	60.1	..
242 Mahankalipuram	706	547	159	..	77.5	22.5	..
243 Ramajosyulukhandriga	194	156	38	..	80.4	19.6	..
244 Balapuram	1,195	892	303	..	74.6	25.4	..
245 Sreekalikapuram	1,792	1,741	51	..	97.2	2.8	..
246 Chandravilasapuram	516	490	26	..	95.0	5.0	..
247 Ramapura Agraharam	115	115	100
248 Govatsapuram (Uninhabited)
249 Srikrishnapuram (Uninhabited)
250 Velurukrishnamanaidukhandriga.	621	110	510	1	17.7	82.1	0.2
251 Lakshminarasimhapuram ..	286	2	284	..	0.7	99.3	..
252 Thondamanatinarayanareddi-khandriga.	150	17	133	..	11.3	88.7	..
253 Senagalathur Agraharam ..	1,594	966	628	..	60.6	39.4	..
254 Cherukurur	1,586	1,152	433	1	72.6	27.3	0.1
255 Perumathangal (Uninhabited)
256 Kannikapuram	597	155	442	..	26.0	74.0	..
257 Valliyampapuram	198	197	1	..	99.5	0.5	..
258 Padmapuram	164	17	143	4	10.4	87.2	2.4
259 Karthikeyapuram	501	132	369	..	26.3	73.7	..
260 Perumalthangal	109	104	5	..	95.4	4.6	..

(v) TIRUTTANI TALUK—cont.

Code number and name of village or town.	Population.	Mother-tongue.					
		Absolute figures.			Percentage to total population.		
		Tamil.	Telugu.	Other languages.	Tamil.	Telugu.	Other languages.
(1)	(2)	(3)	(4)	(5)	(6)	(7)	(8)
261 Ramalingapuram	353	9	344	..	2.5	97.5	..
262 Parasapuram	123	..	123	100	..
263 Venugopalapuram	312	10	302	..	3.2	96.8	..
264 Tirumalarajapuram	677	229	448	..	33.8	66.2	..
265 Allipulagunta	163	41	122	..	25.2	74.8	..
266 Damaneri	700	1	699	..	0.1	99.9	..
267 Swethavarahapuram	108	108	100
268 Vellatur	628	595	33	..	94.7	5.3	..
269 Ammaneri	428	424	4	..	99.1	0.9	..
270 Kondapuram	699	428	271	..	61.2	38.8	..
271 Mavidimanumula (Uninhabited)
272 Venkataperumalvajapuram	582	470	112	..	80.8	19.2	..
273 Gangamambapuram	463	88	375	..	19.0	81.0	..
274 Kodandaramapuram	165	12	153	..	7.3	92.7	..
275 Tirunadharajapuram	327	290	47	..	85.6	14.4	..
276 Balijakhandriga	338	52	265	21	15.4	78.4	6.2
277 Veeramangalam	2,367	1,873	494	..	79.1	20.9	..
278 Audivarahapuram	864	657	207	..	76.0	24.0	..
279 Mambakkam	800	116	684	..	14.5	85.5	..
280 Peddakadambur	1,108	1,063	42	3	95.9	3.8	0.3
281 Peddanagapudi	1,123	781	342	..	69.5	30.5	..
282 Devakipuram (Uninhabited)
283 Kasavarajupet	446	62	384	..	13.9	86.1	..
284 Bikkasanivengamanaidukhandriga.	80	13	67	..	16.2	83.8	..
285 Chmnakadambur	302	52	250	..	17.2	82.8	..
286 Veeraraghavapuram	2,026	590	1,413	23	29.1	69.7	1.2
287 Tiruvelangadu	2,275	1,972	294	9	86.7	12.9	0.4
288 Narthavada	250	212	38	..	84.8	15.2	..
289 Nayudu Thopu (Uninhabited)
290 Dhanushayapuram (Uninhabited).
291 VEDIYANGADU	2,855	2,500	351	4	87.6	12.3	0.1
292 Devalambapuram Makarajapuram.	906	447	459	..	49.3	50.7	..
293 Chinnanagapudi	696	656	40	..	94.3	5.7	..
294 Eerumbi alias Aswarevanthapuram.	2,458	2,362	96	..	96.1	3.9	..
295 Viranathur	941	683	258	..	72.6	27.4	..
296 Ayyaneri	1,516	1,247	269	..	82.3	17.7	..
297 Palayanur	1,115	923	192	..	82.8	17.2	..
298 Bhagavatha Pattabhirampuram.	63	63	100
299 Pulavanalluru	164	..	164	100	..
300 Singarajapuram (Uninhabited)
301 Gopalapuram	353	162	145	46	45.9	41.1	13.0
302 Chinnaramapuram	158	158	100
303 Peddaramapuram	803	490	312	1	61.0	38.9	0.1
304 Chanurmallavaram	890	714	176	..	80.2	19.8	..
305 Koleri alias Sahasrapadanapuram.	648	485	163	..	74.8	25.2	..
306 Banapuram (Uninhabited)
307 Vyasapuram	1,674	960	608	106	57.4	36.3	6.3
308 Rajapadmapuram	369	148	221	..	40.1	59.9	..
309 Rajaratnapuram	109	107	2	..	98.2	1.8	..
310 Jagirmangalam	442	99	332	11	22.4	75.1	2.5
311 Mylarwada	1,198	1,147	51	..	95.7	4.3	..
312 Makamambapuram	390	354	36	..	90.8	9.2	..
313 Tirumalambapuram	183	176	7	..	96.2	3.8	..
314 Parabhayanakarapuram	159	28	131	..	17.6	82.4	..
315 Meesaragantapuram	472	455	16	1	96.4	3.4	0.2
316 Makamambapuram (Uninhabited).
317 Nilotpalapuram	446	346	100	..	77.6	22.4	..
318 Padmapuram	170	47	123	..	27.6	72.4	..
319 Paivalasa	688	653	35	..	94.9	5.1	..
320 Katarikuppam	477	466	11	..	97.7	2.3	..

(v) TIRUTTANI TALUK—cont.

Code number and name of village or town.	Population.	Mother-tongue.					
		Absolute figures.			Percentage to total population.		
		Tamil.	Telugu.	Other languages.	Tamil.	Telugu.	Other languages.
(1)	(2)	(3)	(4)	(5)	(6)	(7)	(8)
321 Perumalrajupeta	1,872	1,054	811	7	56.3	43.3	0.4
322 Thandlam	1,247	1,025	222	..	82.2	17.8	..
323 Nandhimangalam	1,019	479	538	2	47.0	52.8	0.2
324 Shrotriam Pattabhirampuram alias Chinnamapet.	609	568	39	2	93.3	6.4	0.3
325 Tholudavoor	650	618	32	..	95.1	4.9	..
326 Marudavallipuram	407	382	25	..	93.9	6.1	..
327 Manoor	1,275	1,234	36	5	96.8	2.8	0.4
328 Kuppam khandriga	735	721	14	..	98.1	1.9	..
329 Harischandrapuram	900	519	..	381	57.7	..	42.3
330 Lakshmivilasapuram	276	276	100
331 Saunakapuram (Uninhabited)
332 Orathur	438	412	26	..	94.1	5.9	..
333 Pakasala	573	426	147	..	74.3	25.7	..
334 Japti Shrotrium Ramapuram	240	240	100
335 Peddakalakattur	1,120	922	198	..	82.3	17.7	..
336 Chinnamandali	399	398	1	..	99.7	0.3	..
337 Chitrambakam	397	397	100
338 Kalambakam	728	715	13	..	98.2	1.8	..
Village numbers not noted	78	44	31	3	56.4	39.7	3.9
Taluk total	232,880	140,961	87,464	4,455	60.5	37.6	1.9

MYSORE STATE

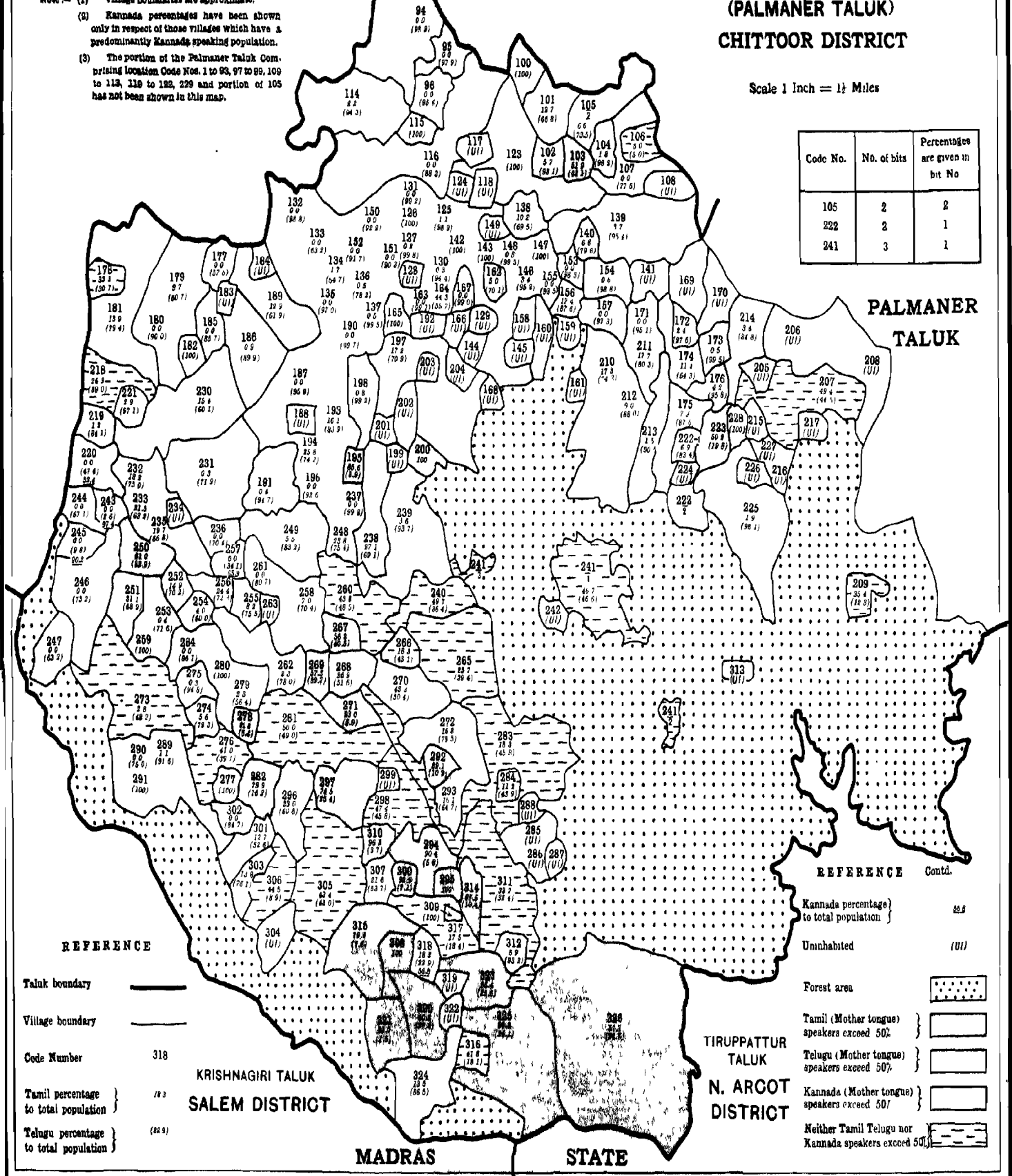
KANGUNDI SUB TALUK

(PALMANER TALUK)
CHITTOOR DISTRICT

- Note :- (1) Village boundaries are approximate.
(2) Kannada percentages have been shown only in respect of those villages which have a predominantly Kannada speaking population.
(3) The portion of the Palmaner Taluk comprising location Code Nos. 1 to 93, 97 to 99, 109 to 113, 119 to 123, 229 and portion of 105 has not been shown in this map.

Scale 1 Inch = 1 1/2 Miles

Code No.	No. of bits	Percentages are given in bit No
105	2	2
222	2	1
241	3	1



REFERENCE

- Taluk boundary ———
- Village boundary ———
- Code Number 318
- Tamil percentage } 79.3
- to total population
- Telugu percentage } 82.9
- to total population

REFERENCE Contd.

- Kannada percentage } 82.5
- to total population
- Uninhabited (U)
- Forest area [Dotted pattern]
- Tamil (Mother tongue) } speakers exceed 50% [Horizontal lines]
- Telugu (Mother tongue) } speakers exceed 50% [Vertical lines]
- Kannada (Mother tongue) } speakers exceed 50% [Diagonal lines]
- Neither Tamil Telugu nor } Kannada speakers exceed 50% [Cross-hatch]

(vi) PALMANER TALUK.

Code number and name of village or town.	Population.	Mother-tongue.							
		Absolute figures.				Percentage to total population.			
		Tamil.	Telugu.	Kannada.	Other languages.	Tamil.	Telugu.	Kannada.	Other languages.
(1)	(2)	(3)	(4)	(5)	(6)	(7)	(8)	(9)	(10)
1 Kallupalli	1,390	13	1,344	..	33	0.9	96.7	..	2.4
2 Kalagatoor	1,108	112	996	10.1	89.9
3 Melumai	2,343	82	2,211	29	21	3.5	94.4	1.2	0.9
4 Dandapalli	2,082	34	1,687	135	226	1.6	81.0	6.5	10.9
5 Maredupalli	413	4	402	..	7	1.0	97.3	..	1.7
6 Gangayaram	1,687	9	1,567	42	69	0.5	92.9	2.5	4.1
7 Pathikonda	883	4	873	..	6	0.4	98.9	..	0.7
8 Keelapalle	795	47	731	..	17	5.9	92.0	..	2.1
9 Mamadugu	1,237	29	1,130	..	78	2.3	91.4	..	6.3
10 Jeedimakulapalle	608	..	594	..	14	..	97.7	..	2.3
11 Moram	945	24	883	..	38	2.6	93.4	..	4.0
12 Ranginayanipalle	6	..	6	100
13 Nagamangalam	103	101	..	1.9	..	98.1
14 Palmaner (Non-City Urban)	6,778	1,437	3,605	156	1,580	21.2	53.2	2.3	23.3
15 Palmaner (Rural)	1,790	15	1,747	4	24	0.8	97.6	0.2	1.4
16 Jallipeta	496	8	488	1.6	98.4
17 Kurmoyi	1,479	213	1,056	..	210	14.4	71.4	..	14.2
18 Pengaragunta	1,519	104	1,370	36	9	6.8	90.2	2.4	0.6
19 Samudrapalle	440	3	437	0.7	99.3
20 Sreerangarajapuram	164	..	164	100
21 Gundlapalle	57	..	57	100
22 Ayyamreddipalle	81	..	81	100
23 Ankamvaripalle (Uninhabited)
24 Kolamasanpalle	1,917	141	1,670	3	103	7.4	87.1	0.1	5.4
25 Belupalle	1,732	120	1,381	77	154	6.9	79.7	4.5	8.9
26 Alapalle	819	3	806	2	8	0.4	98.4	0.2	1.0
27 Peddachellaragunta	732	14	666	26	26	1.9	91.0	3.5	3.6
28 Gollachimanapalle	970	1	804	27	138	0.1	82.9	2.8	14.2
29 Lakkanapalle	1,292	101	928	32	231	7.8	71.8	2.5	17.9
30 Settipalle	373	59	296	8	10	15.8	79.4	2.1	2.7
31 Karadimadugu	382	11	358	..	13	2.9	93.7	..	3.4
32 Chethapenta	210	113	97	53.8	46.2
33 Kambampalle	566	4	551	..	11	0.7	97.4	..	1.9
34 Kammanapalle	756	10	670	1	75	1.3	88.6	0.2	9.9
35 Balapagaripalle	1,785	238	1,506	4	37	13.3	84.4	0.2	2.1
36 Theertham	1,738	27	1,408	76	227	1.6	81.0	4.3	13.1
37 Ganginayanipalle	749	1	712	14	22	0.1	95.1	1.9	2.9
38 Dharmapuri	245	11	234	4.5	95.5
39 Chappiadipalle	865	291	568	2	4	33.6	65.7	0.2	0.5
40 Bairreddypalle	2,498	186	1,708	128	476	7.4	68.4	5.1	19.1
41 Moolathimmenapalle (Uninhabited).
42 Donthirallapalle (Uninhabited)
43 Mekalanagireddipalle	294	..	209	..	85	..	71.1	..	28.9
44 Veeralabanda (Uninhabited)
45 Thotakanama	1,195	37	890	3	265	3.1	74.5	0.2	22.2
46 Kaigallu	154	4	150	2.6	97.4
47 Devadoddi	537	31	444	1	61	5.8	82.7	0.2	11.3
48 Pathurnatham	1,945	432	1,286	7	220	22.2	66.1	0.4	11.3
49 Kadapanatham	553	111	228	24	190	20.1	41.2	4.3	34.4
50 Gowwithemepalle	1,814	118	1,464	63	169	6.5	80.7	3.5	9.3
51 Nellipatla	1,381	32	1,209	15	125	2.3	87.6	1.1	9.0
52 Thimiahgaripalle	58	..	58	100
53 Raghunayakuladinne (Uninhabited).
54 Juvunipalle	1,578	7	1,517	..	54	0.5	96.1	..	3.4
55 Krishnapuram	1,961	26	1,756	7	172	1.3	89.6	0.3	8.8

(vi) PALMANER TALUK—cont.

Code number and name of village or town.	Population.	Mother-tongue.							
		Absolute figures.				Percentage to total population.			
		Tamil.	Telugu.	Kannāda.	Other languages.	Tamil.	Telugu.	Kan-nada.	Other languages.
(1)	(2)	(3)	(4)	(5)	(6)	(7)	(8)	(9)	(10)
56 Gonumakulapalle	1,383	154	1,176	9	44	11.2	85.0	0.6	3.2
57 Kumbarlapalle	947	..	793	..	154	..	83.7	..	16.3
58 Nernipalle	914	10	652	252	..	1.1	71.3	27.6	..
59 Peddanapalle (Uninhabited)
60 Bodiguttapalle	734	2	693	..	39	0.3	94.4	..	5.3
61 Thirumalapiebigundlapalle (Uninhabited).
62 Pyapalle	131	2	127	2	..	1.5	97.0	1.5	..
63 Patrapalle	629	2	547	..	80	0.3	87.0	..	12.7
64 Venkatagirikota	2,148	247	1,336	50	515	11.5	62.2	2.3	24.0
65 Hanumapalle	285	..	7	..	278	..	2.5	..	97.5
66 Muddasamudram (Uninhabited)..
67 Papepalle	209	1	208	0.5	99.5
68 Gudipalle	74	11	44	19	..	14.9	59.4	25.7	..
69 Yalakallu	818	149	538	..	131	18.2	65.8	..	16.0
70 Peddabharanipalle	858	22	615	59	162	2.6	71.7	6.8	18.9
71 Bairupalle	1,018	85	827	13	93	8.4	81.2	1.3	9.1
72 Mudaramdoddi	2,384	401	1,246	3	734	16.8	52.2	0.2	30.8
73 Vibuthiyalanagaram	95	..	95	100
74 Kongatam	1,036	18	774	14	230	1.7	74.7	1.4	22.2
75 Naditheeratham Dasaralapalle (Uninhabited).
76 Sivunikuppam	637	8	408	..	221	1.3	64.0	..	34.7
77 Chinnakongatam (Uninhabited)
78 Padigalakuppam	1,429	..	1,199	23	207	..	83.9	1.6	14.5
79 Vogu	453	89	353	..	11	19.7	77.9	..	2.4
80 Mattiguttapalle	70	..	70	100
81 Pamuganipalle	1,010	46	886	..	78	4.6	87.7	..	7.7
82 Verrivanipalle (Uninhabited)
83 Konerugollapalle	252	92	144	16	..	36.5	57.1	6.4	..
84 Konganapalle	681	110	537	..	34	16.1	78.9	..	5.0
85 Cheldiganipalle	338	2	330	..	6	0.6	97.6	..	1.8
86 Veradikappam	156	..	104	..	52	..	66.7	..	33.3
87 Bandapalle	469	28	412	..	29	6.0	87.8	..	6.2
88 Kothakota	710	14	696	2.0	98.0
89 Chintamakulapalle	1,056	169	715	142	30	16.0	67.7	13.5	2.8
90 Boyachinnaganpalle	524	21	501	..	2	4.0	95.6	..	0.4
91 Byparedlapalle	179	..	179	100
92 Harikachinnepalle	62	..	62	100
93 Jodi Valagalakuppam	26	..	26	100
94 Anikara	746	..	738	..	8	..	98.9	..	1.1
95 Nellapareddiyuru	289	..	283	..	6	..	97.9	..	2.1
96 Regadadinnepalle	204	..	195	..	9	..	95.6	..	4.4
97 Kempasamudram	364	..	363	..	1	..	99.7	..	0.3
98 Thimmasamudram (Uninhabited).
99 Ramkuppam	1,599	128	1,053	28	390	8.0	65.9	1.7	24.4
100 Chinnagandlapalle	161	..	161	100
101 Krishnapuram	639	81	427	27	104	12.7	66.8	4.2	16.3
102 Ponnepalle	87	5	81	..	1	5.7	93.1	..	1.2
103 Matam	241	125	104	12	..	51.9	43.1	5.0	..
104 Matemsanthimpalle	112	2	110	1.8	98.2
105 Rajupet	936	62	688	20	166	6.6	73.5	2.2	17.7
106 Kodithipalle	20	1	1	..	18	5.0	5.0	..	90.0
107 Santhur	250	..	194	50	6	..	77.6	20.0	2.4
108 Gollapalle (Uninhabited)
109 Gorvimakulapalle	1,200	45	1,066	4	85	3.8	88.8	0.3	7.1
110 Pandyalammadugu	1,201	82	1,097	4	18	6.8	91.4	0.3	1.5

(vi) PALMANER TALUK—cont.

Code number and name of village or town.	Population.	Mother-tongue.									
		Absolute figures.				Percentage to total population.					
		Tamil.	Telugu.	Kannada.	Other languages.	Tamil.	Telugu.	Kannada.	Other languages.		
(1)	(2)	(3)	(4)	(5)	(6)	(7)	(8)	(9)	(10)		
111 Bandarlapalle	2,120	352	1,657	38	73	16.6	78.2	1.8	3.4		
112 Giddapalle	167	..	166	..	1	..	99.4	..	0.6		
113 Pamanaboynapalle	63	..	62	..	6	..	91.2	..	8.8		
114 Peddur	491	11	463	17	..	2.2	94.3	3.5	..		
115 Viddivanikothur	55	..	55	100		
116 Chenguballa	1,105	..	976	..	129	..	88.3	..	11.7		
117 Mottakottur (Uninhabited)		
118 Jonniganur (Uninhabited)		
119 Athikuppam	310	11	299	3.5	96.5		
120 Manendram	588	5	573	7	3	0.9	97.4	1.2	0.5		
121 Jodichenureddipalli	15	..	15	100		
122 Muddanapalli	1,004	2	553	23	426	0.2	55.1	2.3	42.4		
123 Kenamakulapalle	1,132	..	1,132	100		
124 Varedepalle (Uninhabited)		
125 Gunjarlapalle	261	3	258	1.1	98.9		
126 Nakkanapalle	206	..	206	100		
127 Nadimpalle	641	1	640	0.2	99.8		
128 Ranapalle (Uninhabited)		
129 Buradasiddanapalle (Uninhabited)		
130 Thummisi	396	1	374	19	2	0.3	94.4	4.8	0.5		
131 Chintakampalle	128	..	127	1	99.2	0.8	..		
132 Sathu	486	..	480	..	6	..	98.8	..	1.2		
133 Kondathimmanapalle	38	..	24	7	7	..	63.2	18.4	18.4		
134 Rallabudugur	1,261	21	816	52	372	1.7	64.7	4.1	29.5		
135 Ramegounipalle	135	..	131	4	97.0	3.0	..		
136 Setiganikurubur	202	1	158	43	..	0.5	78.2	21.3	..		
137 Thippanapalle	220	1	219	0.5	99.5		
138 Arimuthanapalle	197	20	137	17	23	10.2	69.5	8.6	11.7		
139 Dandikuppam	647	24	617	..	6	3.7	95.4	..	0.9		
140 Chowdampalle	88	6	70	12	..	6.8	79.6	13.6	..		
141 Ammavaripet (Uninhabited)		
142 Kottbur	153	..	153	100		
143 Karaguniyur	31	..	31	100		
144 Nallaguttapalle (Uninhabited)		
145 Veduruguttapalle (Uninhabited)		
146 Abakaladoddi	495	17	471	..	7	3.4	95.2	..	1.4		
147 Kothiguttapalle	139	..	139	100		
148 Peddabommanapalle	205	1	204	0.5	99.5		
149 Chinnabommapalle (Uninhabited)		
150 Hospeta	322	..	297	15	10	..	92.2	4.7	3.1		
151 Chinnaradoddi	72	..	65	7	90.3	9.7	..		
152 Gollapalle	156	..	143	..	13	..	91.7	..	8.3		
153 Kadirimuthnapalle	58	..	57	..	1	..	98.3	..	1.7		
154 Vetagirikothur	162	1	160	..	1	0.6	98.8	..	0.6		
155 Bennampalle	31	..	29	..	2	..	93.5	..	6.5		
156 Reddlapalle	177	22	155	12.4	87.6		
157 Kolamadugu	189	..	184	..	5	..	97.3	..	2.7		
158 Chillamanipalle (Uninhabited)		
159 Gollapalledinne (Uninhabited)		
160 Jeeddimanipalle (Uninhabited)		
161 Anchinayanikuppam (Uninhabited)		
162 Donkumanipalle	201	10	141	6	44	5.0	70.1	3.0	21.9		
163 Narasimhapalle	119	..	118	1	99.1	0.9	..		
164 Pakampalle	174	77	97	44.3	55.7		
165 Jalliganipalle	144	..	144	100		

(vi) PALMANER TALUK—cont.

Code number and name of village or town.	Population.	Mother-tongue.								
		Absolute figures.				Percentage to total population.				
		Tamil.	Telugu.	Kan-nada.	Other languages.	Tamil.	Telugu.	Kan-nada.	Other languages.	
(1)	(2)	(3)	(4)	(5)	(6)	(7)	(8)	(9)	(10)	
166 Kanameladoddi (Uninhabited)
167 Morasanapalle	202	..	200	1	1	..	99.0	0.5	0.5	..
168 Banthimadugollapalle (Uninhabited).
169 Killkupadu (Uninhabited)
170 Kadasinakuppam (Uninhabited).
171 Ramapuram	143	..	136	..	7	..	95.1	..	4.9	..
172 Kavankiroddepalle	125	3	122	2.4	97.6
173 Balabanapalle	220	1	219	0.5	99.5
174 Vizalapuram	535	61	344	64	66	11.4	64.3	12.0	12.3	..
175 Unisiganipalle	1,141	90	1,000	14	37	7.9	87.6	1.2	3.3	..
176 Battuvaripalle	24	1	23	4.2	95.8
177 Karamatlagollapalle	177	..	102	42	33	..	57.6	23.7	18.7	..
178 Bisanthan	114	38	35	14	27	33.3	30.7	12.3	23.7	..
179 Pogurupalle	728	71	369	288	..	9.7	50.7	39.6
180 Dasamanipalle	312	..	281	31	90.0	10.0
181 Athinatham	238	33	189	15	1	13.9	79.4	6.3	0.4	..
182 Anganamalakothur	58	..	58	100
183 Lingapuramdinne (Uninhabited).
184 Rallkothur (Uninhabited)
185 Muddanapalle	105	..	90	..	15	..	85.7	..	14.3	..
186 Bevanapalle	109	1	98	10	..	0.9	89.9	9.2
187 Chinnur	513	..	492	21	95.9	4.1
188 Chigarlapalle (Uninhabited)
189 Peddur	751	97	465	79	110	12.9	61.9	10.5	14.7	..
190 Solisetipalle	370	1	369	0.3	99.7
191 Yamaganipalle	1,043	4	988	51	..	0.4	94.7	4.9
192 Bandarlapalle (Uninhabited)
193 Kanamagutapalle	124	20	104	16.1	83.9
194 Papanur	97	25	72	25.8	74.2
195 Jathikarthanapalle	181	155	7	6	13	85.6	3.9	3.3	7.2	..
196 Peddabadanavada	271	..	251	20	92.6	7.4
197 Karlagatta	1,607	276	1,139	178	14	17.2	70.9	11.1	0.8	..
198 Cheemanapalle	253	2	251	0.8	99.2
199 Bennayanur (Uninhabited)
200 Podur	49	49	100
201 Preethichamanu (Uninhabited)
202 Buddaganur (Uninhabited)
203 Sonnegownipalle (Uninhabited)
204 Kadirichanapalle (Uninhabited)
205 Bondalagunta (Uninhabited)
206 Pullagurapalle (Uninhabited)
207 Singasamudram	1,219	602	542	19	56	49.4	44.5	1.5	4.6	..
208 Chintamaninatham (Uninhabited).
209 Veeramala	1,250	442	154	66	588	35.4	12.3	5.3	47.0	..
210 Sivaramapuram	1,078	187	801	..	90	17.3	74.3	..	8.4	..
211 Gollapalle	355	63	285	..	7	17.7	80.3	..	2.0	..
212 Thippaganur	67	6	59	2	..	9.0	88.0	3.0
213 Joukupalle	201	3	182	16	..	1.5	90.5	8.0
214 Kenchanaballe	679	23	576	4	76	3.4	84.8	0.6	11.2	..
215 Papiroddiyur (Uninhabited)
216 Reddivanipedu (Uninhabited)
217 Mamankreddipalle (Uninhabited).
218 Kodathanapalle	613	149	239	181	44	24.3	39.0	29.5	7.2	..
219 Peddagollapalle	163	2	137	24	..	1.2	84.1	14.7
220 Chinnagollapalle	359	..	171	188	47.6	52.4
221 Gudichembagiri	104	3	101	2.9	97.1
222 Peddkurabalapalle	349	24	291	32	2	6.9	83.4	9.1	0.6	..
223 Balla	929	466	184	11	268	50.2	19.8	1.2	28.8	..
224 Krishnapuram Dinne (Uninhabited).
222 Kothapalle	54	1	53	1.9	98.1

(vi) PALMANER TALUK—cont.

Code number and name of village or town.	Population.	Mother-tongue.								
		Absolute figures.				Percentage to total population.				
		Tamil.	Telugu.	Kan- nada.	Other languages.	Tamil.	Telugu.	Kan- nada.	Other languages.	
(1)	(2)	(3)	(4)	(5)	(6)	(7)	(8)	(9)	(10)	
286 Vepanapalle (Uninhabited)
287 Nimmakampalli (Uninhabited)
288 Sajjalapalle (Uninhabited)
289 Gudlan yanipalle	..	629	7	576	46	..	1.1	91.6	7.3	..
290 Urinayanipalle	..	200	..	150	50	75.0	25.0	..
291 Urinayanikothur	..	116	..	116	100
292 Chinabangarunatham	..	257	229	28	89.1	10.9
293 Maravada	..	354	57	229	59	9	16.1	64.7	16.7	2.5
294 Chinnagopanapalle	..	261	236	15	..	10	90.4	5.8	..	3.8
295 Peddagopanapalle	..	220	220	100
296 Gonugur	..	868	200	526	89	53	23.0	60.6	10.3	6.1
297 Vendugampalle	..	1,840	1,371	468	..	1	74.5	25.4	..	0.1
298 Peddabangarunatham	..	437	207	200	22	8	47.4	45.8	5.0	1.8
299 Yerrabettanur (Uninhabited)
300 Mankaladoddi	..	530	501	38	92.9	7.1
301 Urlavabanapalli	..	401	51	211	139	..	12.7	52.6	34.7	..
302 Gutlapanayanapalle	..	118	..	100	18	84.7	15.3	..
303 Maruppalli	..	188	26	143	19	..	13.8	76.1	10.1	..
304 Mallegunta (Uninhabited)
305 Nadimoor	..	1,393	605	599	189	..	43.4	43.0	13.6	..
306 Kurmanipalle	..	337	150	30	111	46	44.5	8.9	32.9	13.7
307 Vasnadu	..	527	114	283	73	57	21.6	53.7	13.9	10.8
308 Peddaboggupalle	..	58	58	100
309 Gowdappaour	..	13	..	13	100
310 Mulakalapalle	..	297	286	11	96.3	3.7
311 Mittapalle	..	1,941	645	628	452	216	33.2	32.4	23.3	11.1
312 Thimmapuram	..	118	7	110	1	..	5.9	93.2	0.9	..
313 Doobulachinta (Uninhabited)
314 Dommara Agraharam	..	48	42	5	1	..	87.5	10.4	2.1	..
315 Paipalyam	..	1,865	1,481	140	177	67	79.4	7.5	9.5	3.6
316 Mottakadirinur	..	227	95	41	91	..	41.8	18.1	40.1	..
317 Vanaguttapalle	..	537	94	99	211	133	17.5	18.4	39.3	24.8
318 Chekkunatham	..	410	75	94	233	8	18.3	22.9	56.8	2.0
319 Katanur (Uninhabited)
320 Thummalapalli	..	66	40	18	5	3	60.6	27.3	7.6	4.5
321 Advimulakalapalle	..	203	170	3	..	30	83.7	1.5	..	14.8
322 Kanamapatcharlapalli (Uninhabited).
323 Jampanur	..	149	84	38	12	15	56.4	25.5	8.0	10.1
324 Chinnavobba	..	342	46	296	13.5	86.5
325 Mallanur	..	1,434	721	375	306	32	50.3	26.1	21.4	2.2
326 Advibudugur	..	1,908	976	547	372	13	51.1	28.7	19.5	0.7
Village numbers not noted	..	85	7	66	6	6	8.2	77.7	7.1	7.0
Taluk total	..	169,565	27,228	117,184	10,551	14,602	16.0	69.1	6.3	8.6

